

PHIL ABRAHART

POWERED BY
exp UK

Flat C, 27, Grimston Avenue

£225,000

🛏️ 2 🚿 1 🚽 1



Set on a charming tree-lined road in the desirable West End of Folkestone, this stylish first-floor apartment is offered with no onward chain. The property features a generously proportioned living/dining room leading to a contemporary kitchen/breakfast room fitted with a range of matching wall and base units. There are two double bedrooms, with the master bedroom enjoying views of the rear garden. The accommodation also includes a family bathroom, a separate shower room. Externally, the property benefits from access to a communal rear garden, additionally, the apartment is opposite a park exclusively available to local residents, which is maintained through local contributions.

Please quote PA1009 when calling in.

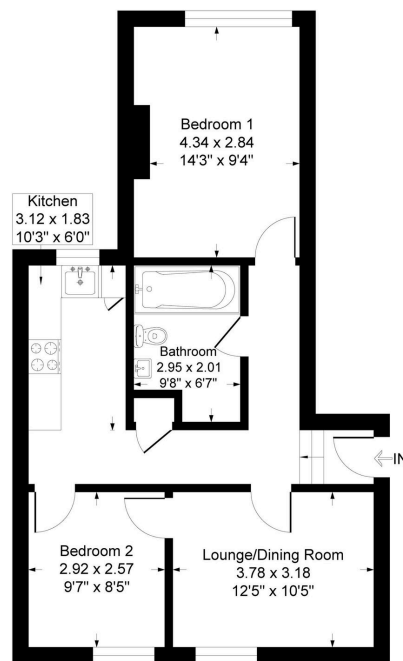
PHIL ABRAHART

POWERED BY
exp UK

- 2 bedroom first floor flat
- Offered with no forward chain!!
- Communal garden to enjoy
- Private park opposite for residents only!
- Walk to the local beach or harbour
- Offered with a brand new 125 year lease
- Live in a Stunning building as one of only 5 other flats
- Renowned locally as a very prestigious road
- Take advantage of Folkestones up and coming Trendy scene now
- Please quote PA1009 when calling in

Flat C, 27 Grimston Ave, Folkestone CT20 2QD

Approximate Gross Internal Floor Area = 56.4 sq m / 608 sq ft



First Floor

Illustration for identification purposes only, measurements are approximate, not to scale.