



**ADAM
HALLIWELL**

POWERED BY
exp UK

Evesham Road, Bishops Cleeve, Cheltenham, GL52

£500,000

🛏️ 4 🚿 2 🚗 1

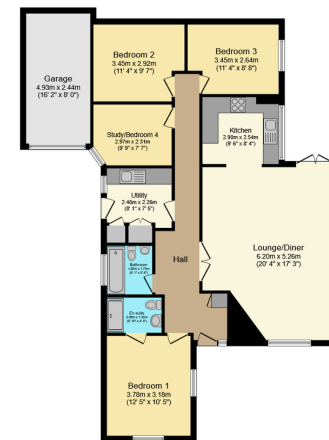


- Detached bungalow
- En-suite to master
- 45' x 20' side/rear garden
- Driveway for 3-4 cars
- Quarter mile to the local park
- Four bedrooms
- Open plan living room
- Garage
- Half a mile walk to the shops
- Large hallway





This delightful detached bungalow, is ideally suited for couples, retirees or families and features a spacious open-plan living room with garden access, four bedrooms including one en-suite, modern kitchen, wet room shower, garage, ample parking, and a south-facing garden, all conveniently located near local amenities and green spaces.



Floor Plan
Floor area 119.4 m² (1,285 sq.ft.)

TOTAL: 119.4 m² (1,285 sq.ft.)

This floor plan is for illustrative purposes only. It is not drawn to scale. Any measurements, floor areas (including any total floor area), openings and orientations are approximate. No details are guaranteed, they cannot be relied upon for any purpose and do not form any part of any agreement. No liability is taken for any error, omission or misstatement. A party must rely upon its own inspection(s). Powered by www.Propertybox.io

Score	Energy rating	Current	Potential
92+	A		
81-91	B		81 B
69-80	C		
55-68	D	64 D	
39-54	E		
21-38	F		
1-20	G		

Call us on

01242 906 586 | 07861 238 913

adamhalliwell@exp.uk.com

Orlando, Old Reddings Road, The Reddings, Cheltenham, GL51 6SA

adam.halliwell.exp.uk.com

Agents Note: Whilst every care has been taken to prepare these particulars, they are for guidance purposes only. All measurements are approximate and are for general guidance purposes only and whilst every care has been taken to ensure their accuracy, they should not be relied upon and potential buyers are advised to recheck the measurements.