

Plot 113, Maes Yr Haul, St Asaph LL17 0LW

£349,995

🛏️ 4 🍳 3 🚗 2

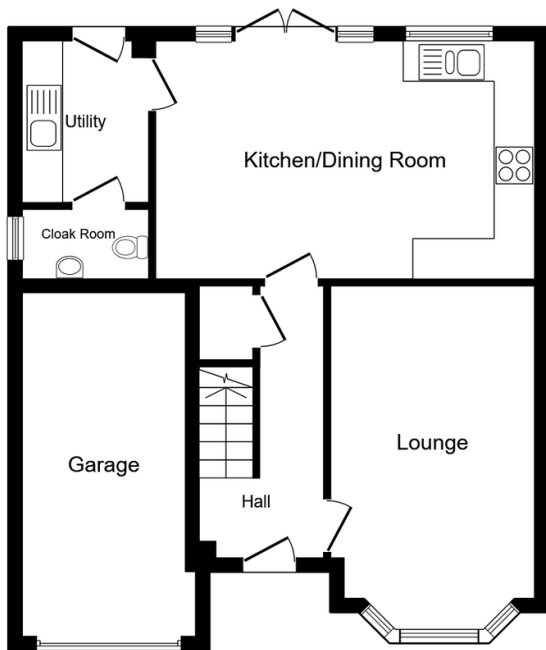


The Wentworth fuses elegant design with contemporary features to create a comfortable home of distinction. The welcoming hallway leads to the spacious living area, while the open-plan kitchen/dining area forms the beating heart of this beautiful house. The en-suite master bedroom is one of four first-floor bedrooms offering plenty of space. Finally there is an integrated garage and utility room. ****£1,000 towards Solicitors fees****

DIRECTIONS From the A55 exit at St Asaph and turn left along the Roe until you reach the mini roundabout. Proceed up the High Street turning right at the Cathedral onto Upper Denbigh Road and the development will be seen on the left hand side.

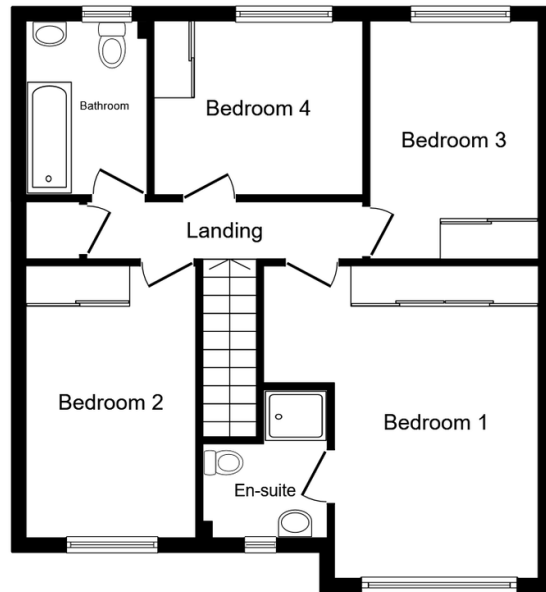
Key Features

- STUNNING FOUR BEDROOM DETACHED HOME
- UTILITY ROOM
- DOUBLE BEDROOMS
- MODERN LIVING
- FREEHOLD
- SPACIOUS KITCHEN/DINER
- GARAGE
- ENCLOSED REAR GARDEN
- 10 YEAR NHB WARRANTY
- COUNCIL TAX - TBC



Ground Floor

Floor area 63.7 sq.m. (685 sq.ft.)



First Floor

Floor area 60.1 sq.m. (646 sq.ft.)

TOTAL: 123.7 sq.m. (1,332 sq.ft.)

This floor plan is for illustrative purposes only. It is not drawn to scale. Any measurements, floor areas (including any total floor area), openings and orientations are approximate. No details are guaranteed, they cannot be relied upon for any purpose and do not form any part of any agreement. No liability is taken for any error, omission or misstatement. A party must rely upon its own inspection(s). Powered by www.Propertybox.io