

Flat 3, Jasmine House, Eden Avenue, Prestatyn, LL19 9DL

£82,000

1 1 1

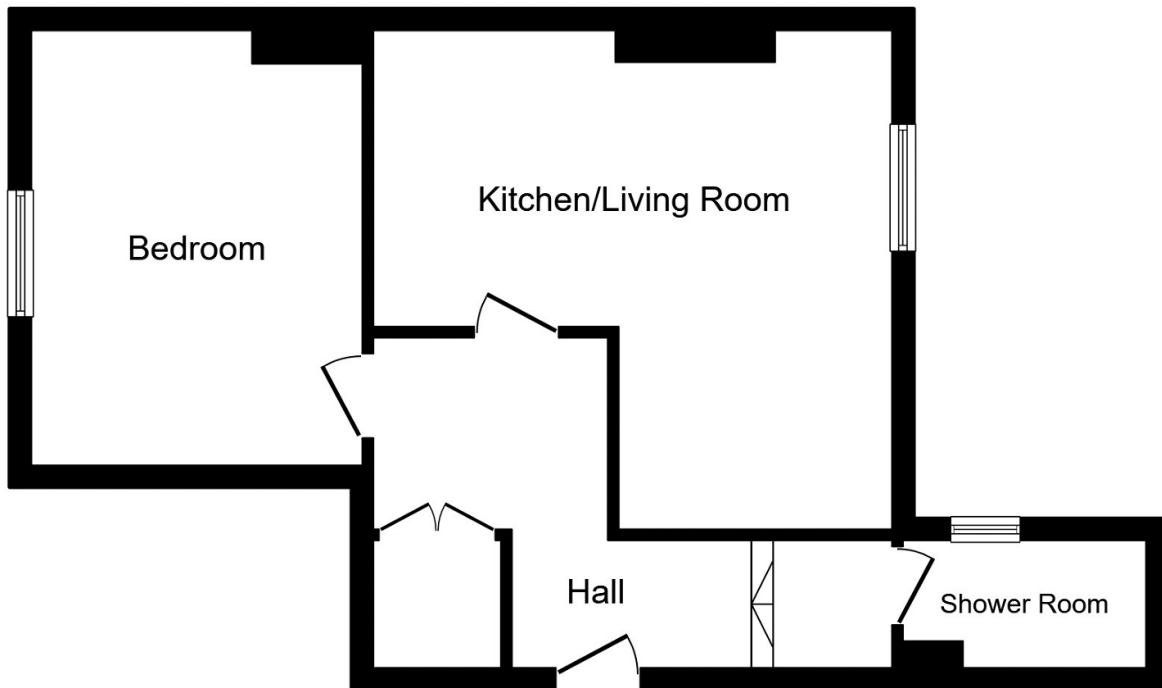


This first floor flat is situated within walking distance of the main town High Street and offers a open plan lounge/kitchen, double bedroom and shower room. Benefitting from off road parking and electric heating. Early viewing recommended

DIRECTIONS - Proceed on foot down the ginnel opposite the Prestatyn office onto Fern Avenue and the entrance to the apartment will be seen directly ahead of you.

## Key Features

- WALKING DISTANCE TO TOWN
- OPEN PLAN KITCHEN/LIVING ROOM
- SHOWER ROOM
- COUNCIL TAX BAND - B
- NO ONWARD CHAIN
- CONVENIENT LOCATION
- DOUBLE BEDROOM
- EPC - C
- FIRST FLOOR FLAT
- LEASEHOLD



**First Floor**

This plan is for illustration purposes only and may not be representative of the property. Plan not to scale.