



'Tiercels', Redmarley, Gloucestershire, GL19 3HS

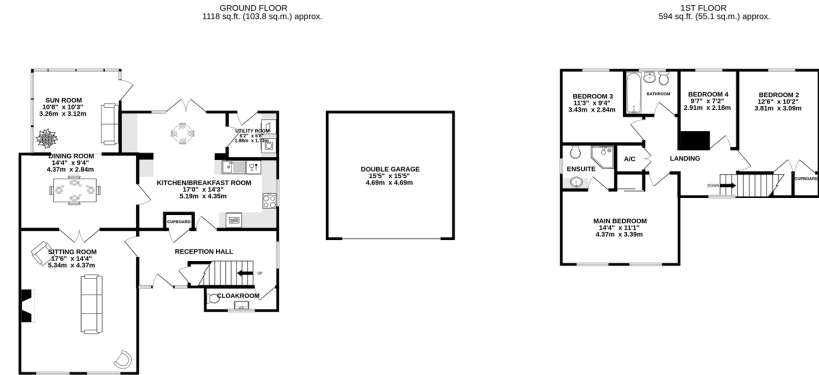
Guide Price £640,000

🛏️ 4 🚿 2 🛋️ 3



- A Handsome 4 Bedroom Detached House
- Double Garage & Parking For Several Vehicles
- Close to Local Amenities Including Tennis & Cricket Clubs
- Excellent Village Location Close to Woodland Walks
- Stunning Countryside Views to the Cotswold Escarpment
- Excellent Transport Links, M50 (Jct 2) Just 2 Miles Away





TOTAL FLOOR AREA: 1711 sq ft (159.0 sq m) approx.
 Whilst every attempt has been made to ensure the accuracy of the floorplan contained here, measurements of doors, windows, rooms and any other items are approximate and no responsibility is taken for any error, omission or misstatement. This plan is for illustrative purposes only and should be used as such by any prospective purchaser. The services, systems and appliances shown have not been tested and no guarantee as to their operability or efficiency can be given.
 Made with Metropix 12/25

'Tiercels' is a fantastically versatile property and would suit a variety of potential purchasers, it is bright and spacious, offering a sort after countryside lifestyle with the benefits of a village location, close to excellent transport links. Built in the 1980s, the house has been enhanced over the years and includes a kitchen extension and relaxing Sun Room. The Kitchen has a breakfast area and separate Utility Room and there is plenty of storage throughout. The views are stunning and stretch over the school field to the Cotswold escarpment beyond, enabling you to watch the seasons go by.

The property benefits from 3 Double Bedrooms the Main Bedroom having an en-suite shower room and the main bathroom servicing the remaining rooms. The fourth bedroom is a single and currently used as a Home Office.

