



Ocle Pychard, Hereford

Guide Price £500,000

🛏️ 4 🚿 2 🚗 2

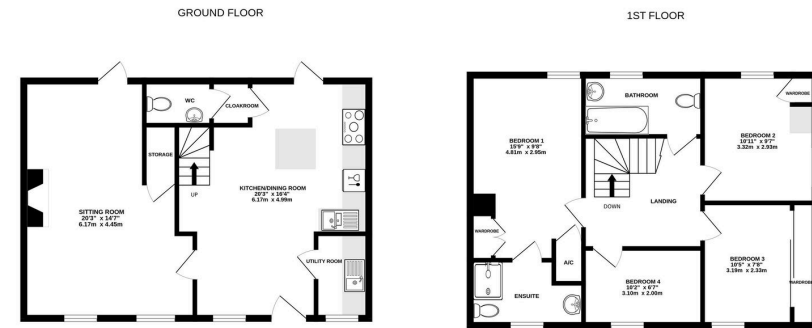


- 4 Bedroom Barn Conversion in Private Courtyard Setting
- Landscaped Rear Garden With Summerhouse & Shed
- Inglenook Fireplace with Multi-Fuel Stove in Sitting Room
- Kitchen/Diner with Granite Worktops & Central Island Room
- Principal Bedroom with Built-in Wardrobe & Ensuite
- Stunning Countryside Views From Most Rooms
- 3 Designated Parking Spaces
- Picturesque Barn Complex Directly Outside





A Characterful, Immaculately Presented 4 Bedroom Barn Conversion in a Private Courtyard Setting in Ocle Pychard, with a large landscaped garden and panoramic serene rural views across rolling Herefordshire countryside.



TOTAL FLOOR AREA: 1212 sq ft. (112.6 sq m.) approx.
 Whilst every attempt has been made to ensure the accuracy of the floorplan contained here, measurements of floors, windows, doors and any other items are approximate and no responsibility is taken for any error, omission or mis-statement. This plan is for illustrative purposes only and should be used as such by any prospective purchaser. The services, systems and appliances shown have not been tested and no guarantee as to their operability or efficiency can be given.
 Made with Metropc 0025

