



Church Road, Tupsley, Hereford

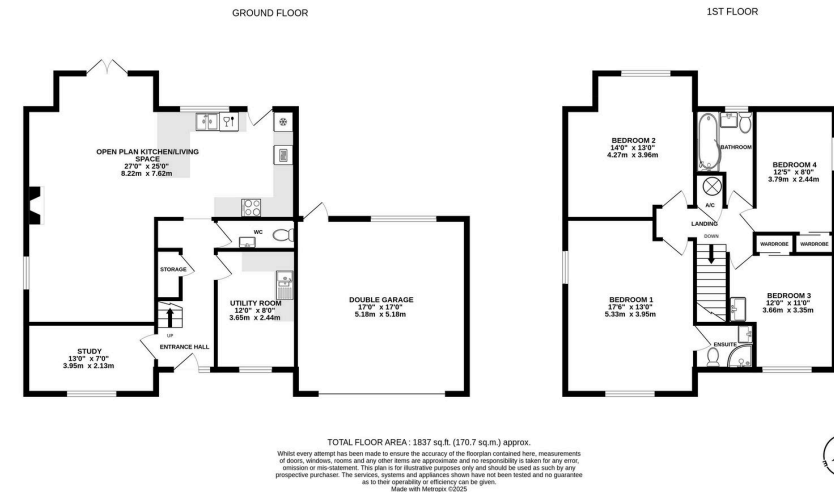
Guide Price £490,000

🛏 4 🚿 2 🛋 2



- Open Plan Kitchen/Diner & Living Space
- Recently Fitted Contemporary Kitchen
- Wrap-Around Gardens
- Double Garage & Large Shed
- 4 Double Bedrooms; Detached
- Highly-Sought After Location





A Spacious and Well-Presented 4 Double Bedroom Detached Home on sought-after Church Road in the Tupsley area of Hereford, featuring an impressive open-plan kitchen, dining, and living space, study, double garage, and wrap-around rear garden.

