





# Ranelagh Street, Whitecross, Hereford

Guide Price £415,000

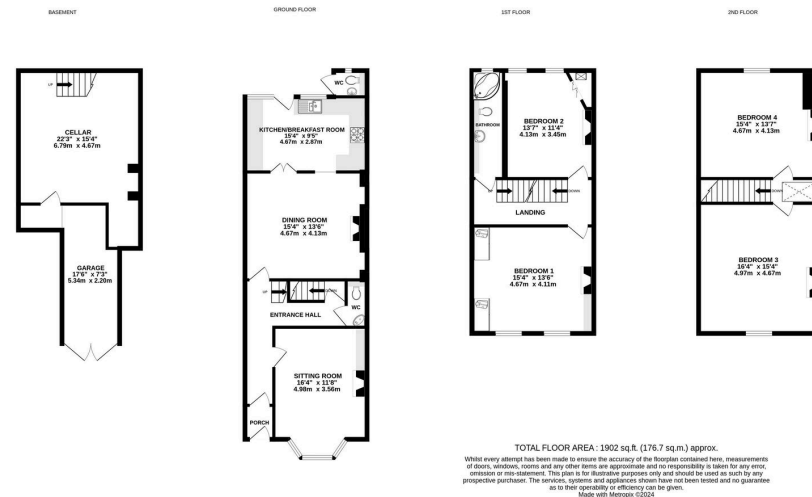
4 1 2





- No Onward Chain
- Basement & Garage
- Sought-After Area
- 4 Double Bedrooms; 4 Storeys
- Charming Period Property
- 1,900 sq. ft





A Characterful 4 Double Bedroom Semi-Detached Victorian Townhouse, set across 4 storeys and located in an enviable part of the City in Whitecross, Hereford, all offered with No Onward Chain.

