



Hopton Road, Hereford

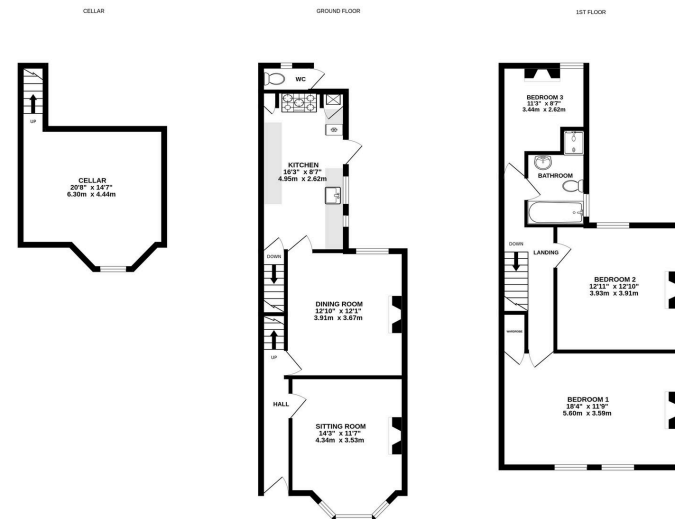
Guide Price £285,000

3 1 2



- Stunning Edwardian Terrace
- 2 Large Doubles + Single Bedroom
- Permit On-Street Parking
- Original Fireplaces & Floorboards
- Near Aylestone Hill
- Walking Distance to City Centre
- Recently Fitted Kitchen
- Cellar with Conversion Potential





A Delightful Edwardian 3 Bedroom Terrace House in Hopton Road near Aylestone Hill in Hereford, recently refurbished to a high standard, including a new kitchen.

