



Athelstan House, Station Road, Gloucester, GL1

£180,000

🛏️ 2 🚿 1 🛋️ 1



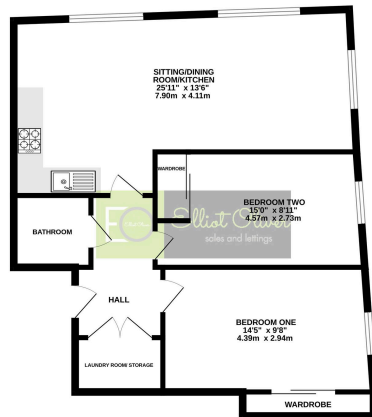
- Two Bedrooms
- Modern Apartment
- Open-Plan Kitchen/Living Area
- Modern Kitchen
- Second Floor
- Newly Decorated
- Stylish Bathroom Area
- No Onward Chain



This modern second-floor apartment in secure Athelstan House features open-plan living, two double bedrooms, a stylish bathroom, and bicycle storage, all in the heart of Gloucester.



SECOND FLOOR
778 sq.ft. (72.3 sq.m.) approx.



TOTAL FLOOR AREA: 778 sq ft (72.3 sq.m.) approx.
While every effort has been made to ensure the accuracy of the floor plan, measurements of spaces within, however they are taken, should not be relied upon for the purpose of any contract. The floor plan is provided for information only and is not intended to be used as a basis for any contract. The floor plan is provided for information only and is not intended to be used as a basis for any contract. The floor plan is provided for information only and is not intended to be used as a basis for any contract.

Energy Efficiency Rating		
	Current	Potential
Very energy efficient - lower running costs		
(92 plus) A		
(81-91) B	84	84
(69-80) C		
(55-68) D		
(39-54) E		
(21-38) F		
(1-20) G		
Not energy efficient - higher running costs		
England & Wales	EU Directive 2002/91/EC	



Elliot Oliver Sales
 101 Promenade, Cheltenham GL50 1NW
 01242 321091
 www.elliottoliver.co.uk

