



FERNDOWN

Vigo | Meopham | Kent | DA13 0SR

STUART REYNOLDS

POWERED BY
exp™ UK



The leafy village of Vigo is located to the South of Meopham and is set along the borders of Trosley Country Park and its 100+ acres. A favoured destination for many buyers wishing to escape the hustle and bustle of larger, built up urban areas in preference of a village way of life. Vigo offers exactly that, a semi rural escape without being isolated and therefore the best of both worlds, a blend of both Town & Country living with a host of on-site amenities to include various shops, village pub and Primary School.

Further facilities can be found nearby in the larger village of Meopham and links to access the M20,M26,A2,M2 motorways are just minutes away. Rail stations at Borough Green, Meopham, Longfield & Sole Street cater for the commuter population.

Inside the home, a spacious hallway greets you on arrival and leads to the double aspect Lounge/Dining Room - benefiting from patio doors which open out to the private, enclosed rear garden. The Kitchen is located at the end of the hall with a variety of fitted cupboards. Upstairs, all three bedrooms are nice sizes with two doubles and a generous single, plus a family bathroom to complete the accommodation.

A parking area can be found to the front of the home whilst the private, allocated Garage is located en bloc just a short stroll away.



Ground Floor

Entrance Hallway

Lounge / Dining Room - 23'2 x 11'3

Kitchen - 9'5 increasing to 16'4 x 7'5

First Floor

Landing

Bedroom 1 - 12'11 x 10'1

Bedroom 2 - 10'1 x 9'6 increasing to 11'8

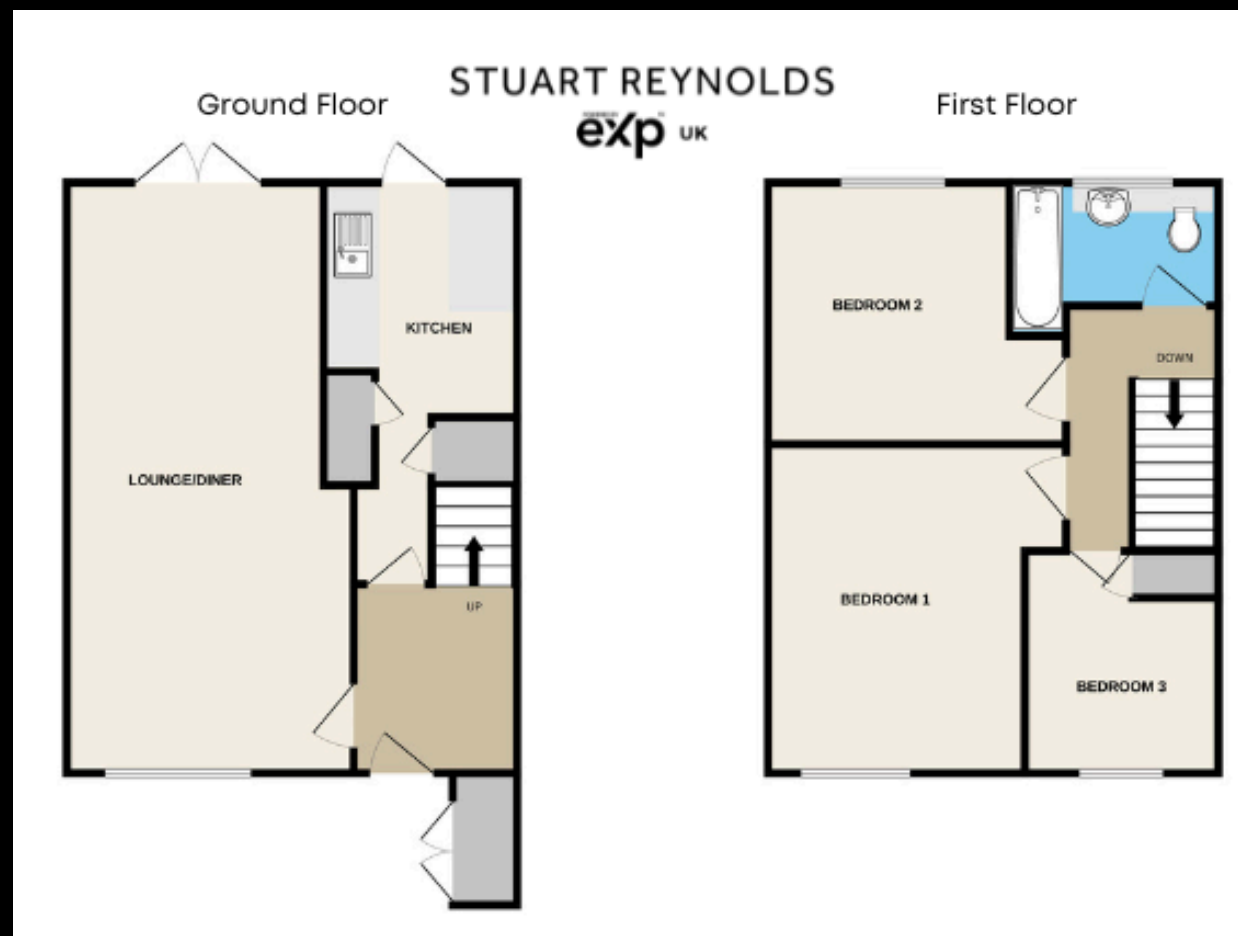
Bedroom 3 - 7'8 x 6'7 increasing to 7'10

Bathroom

Outside

Private Enclosed Garden

Single Garage En Bloc





01732 647009



@sreynoldsrealestate

www.stuartreynolds.exp.uk.com