



EDGAR CLOSE

Kings Hill | West Malling | Kent | ME19 4JE



PROPERTY FEATURES



2 BDRM



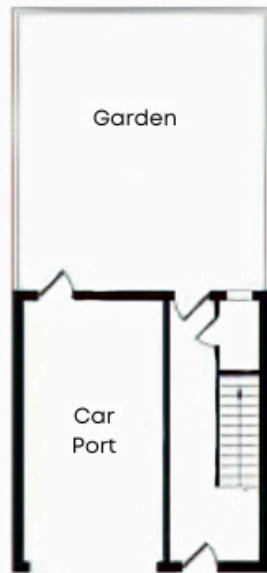
2 BATH



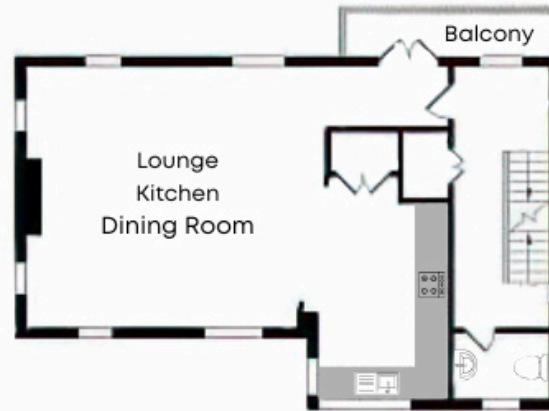
1313 SQFT

Stunning Contemporary Home
Two Double Ensuite Bedrooms
Open Plan Living/Dining/Kitchen Area
Private Car Port
Chain Free Sale





Ground Floor



First Floor



Second Floor

Ground Floor

Hallway with Storage Cupboard

First Floor

Landing

Cloakroom

Living/Dining/Kitchen

Area - 26'2 x 16'10 max

Second Floor

Landing

Master Bedroom - 16'10
max x 11'3

Ensuite Bathroom

Bedroom2 - 12'1 x 11'5

Ensuite Shower Room

Study/Office - 6'1 x 6

Exterior

Garden

Covered Car Port

THE PROPERTY

Welcome to Edgar Close, a stunning home designed by the Sunley Group and constructed in approximately 2006.

Nestled in a delightful setting within Kings Hill, the home is ideally situated within walking distance of all local amenities. These include the esteemed Kings Hill golf course and Liberty Square, home to an array of retailers, supermarkets, various restaurants and a doctor's surgery.

Spanning over 1,300 square feet, this property boasts three levels of innovative, contemporary design that was well ahead of its time. The entrance hall not only grants access to the first floor but also leads to a private, enclosed garden, with a convenient storage cupboard which was once a cloakroom, en route. Cloakroom facilities are found upstairs off from the landing which opens up to a magnificent living and dining area, complete with floor-to-ceiling windows, and seamlessly transitions into the open-plan fitted kitchen, creating an ideal social space for family and guests. A private balcony, thoughtfully positioned to overlook the garden, adds to the charm.

On the second floor, the spacious landing leads to two double bedrooms, each featuring ensuite facilities. The master bedroom stands out with its impressive architectural design and stunning vaulted ceiling. The layout is completed by a separate study/office area with a clever, space saving sliding door, perfect for those needing a dedicated work-from-home space.

Adjacent to the entrance of this home is a covered, private car port.



01732 647009



@sreynoldsrealestate