

Price £400,000

LAWSON
Estate Agency...Only Better



53 BOWERS PARK DRIVE, WOOLWELL, PLYMOUTH, PL6 7SH

WOOLWELL CRESCENT, PLYMOUTH, DEVON, PL6 7RB. TEL: 01752 791333

FULL DESCRIPTION

An extended four bedroom detached property situated in a highly sought after residential location, offering easy access to local amenities. The living accommodation, which is arranged over two levels comprises, an entrance porch, entrance hall, cloakroom, study which was originally the garage, lounge, dining room, conservatory, fitted kitchen with integrated appliances and a utility on the ground floor. On the first floor, the landing leads to a modern shower room and four good sized bedrooms, one has the benefit of an en suite shower room.

Externally, there are front and rear gardens and a driveway providing parking for two cars.

The property also benefits from PVCu double glazing, gas central heating and solar panels.

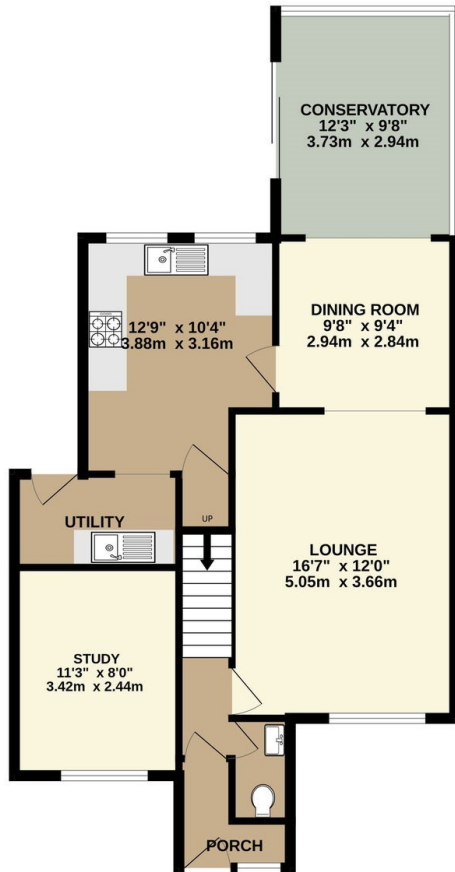
WOOLWELL

Woolwell is a suburb, four miles north from the city of Plymouth, located just outside the city boundary in the district of South Hams with excellent access to Plymbridge Woods and Dartmoor National Park. The area boasts an excellent Primary School, two day-nurseries, a Medical Centre and a Community Centre, which has many function rooms, a small café and is at the heart of the community, holding various events throughout the year. There is also a small complex of six retail outlets, containing four takeaway restaurants and a hairdresser. A large Tesco Extra store is situated on the western boundary of Woolwell, with a recently built Lidl store opposite. There are three playgrounds situated throughout Woolwell, which are an asset to the local families with children, as is the local Scout group. There is a regular bus service, in addition to a very useful park and ride located half a mile away with direct links to Derriford Hospital and Plymouth city centre. Within a few minutes' drive are; Dartmoor National Park, Yelverton Golf Club and Buckland Abbey, the historic home of Sir Francis Drake.

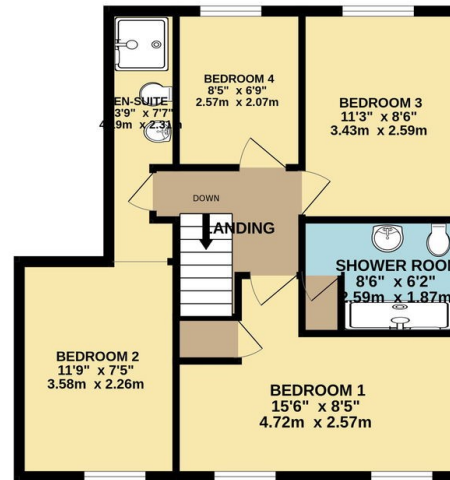


FLOOR PLAN

GROUND FLOOR
760 sq.ft. (70.6 sq.m.) approx.



1ST FLOOR
530 sq.ft. (49.2 sq.m.) approx.



TOTAL FLOOR AREA: 1290 sq.ft. (119.9 sq.m.) approx.

Whilst every attempt has been made to ensure the accuracy of the floorplan contained here, measurements of doors, windows, rooms and any other items are approximate and no responsibility is taken for any error, omission or mis-statement. This plan is for illustrative purposes only and should be used as such by any prospective purchaser. The services, systems and appliances shown have not been tested and no guarantee as to their operability or efficiency can be given.
Made with Metropix ©2024

ACCOMMODATION

Reference made to any fixture, fittings, appliances or any of the building services does not imply that they are in working order or have been tested by us. Purchasers should establish the suitability and working condition of these items and services themselves.

UTILITIES

Mains water, gas, electricity and mains drainage, mobile coverage is likely, broadband connection potential is FTTC and ADSL.

VIEWING

By appointment with Lawson

OUTGOINGS

We understand the property is in band 'D' for council tax purposes and the amount payable for the year 2023/2024 is £2,360.50 (by internet enquiry with South Hams District Council). These details are subject to change.

FLOOR PLANS & ENERGY PERFORMANCE CERTIFICATES

These Floorplans are set out as a guideline only and should not be relied upon as a representation of fact. They are intended for information purposes only and are not to scale. Energy Performance Certificates are produced by an external source and Lawson do not accept responsibility for their accuracy. Copyright Lawson 2023.

BUYERS INFORMATION

Due to the Money Laundering Regulations 2019, we are required to confirm the identity of all our prospective buyers. We therefore charge buyers an AML and administration fee of £60 including VAT for the transaction (not per person). Please note we are unable to issue a memorandum of sale until the checks are complete.

Lawson themselves on behalf of the sellers/landlords of this property whose agents they are given notice that :- (1) These particulars are set out as a general outline for the guidance of prospective buyers/tenants and shall not form the whole or any part of a contract. (2) All descriptions, dimensions and areas, references to condition and necessary permissions for use and occupation and other details are given in good faith and believed to be materially correct but any intending buyer/tenant should not rely on them as statements or representations of fact but must satisfy themselves by inspection or otherwise as to the correctness of each of them. (3) No person in the employ of Lawson has any authority to make or give any representation or warranty at all about the property. (4) No responsibility can be accepted for any expenses incurred by a prospective buyer/tenant in inspecting this property if it is sold, let or withdrawn.

AWAITING EPC

