



Foxhole Road | Paignton | TQ3 3TA

Asking Price Of £229,950

A three bedroom semi detached dormer bungalow located just a mile from Paignton town centre. The property comprises of a welcoming entrance hallway, a large living room through to dining room, a modern kitchen, three double bedrooms, a contemporary family bathroom, rear gardens and a single garage. The bungalow is conveniently located within easy reach of local shops, doctors and pharmacies, schools, bus links and much more. The property is being offered with no onward chain!

- SEMI DETACHED DORMER BUNGALOW
- GARAGE
- SUNNY REAR GARDENS
- MODERN KITCHEN
- THREE BEDROOMS
- NO CHAIN
- CLOSE TO LOCAL AMENITIES

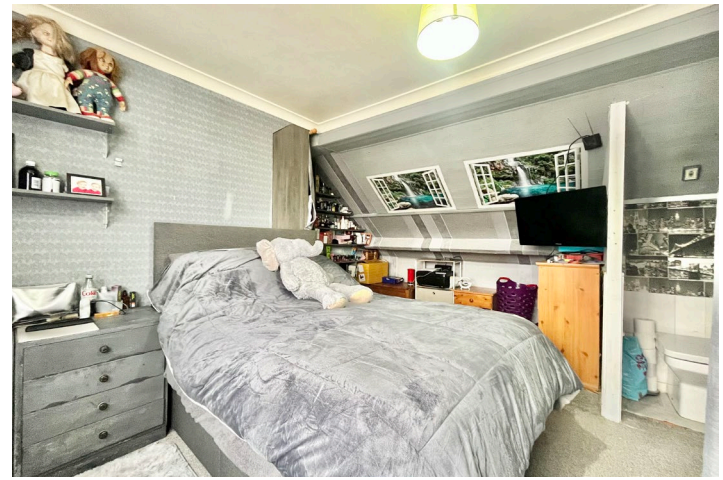
ENTRANCE A uPVC double glazed front door opening into a welcoming entrance hallway with doors leading to the adjoining rooms, stairs rising to the first floor, overhead lighting and a gas central heated radiator.

LIVING ROOM - 4.08m x 3.49m (13'4" x 11'5") A bright and spacious living room to the front aspect of the property that opens into the dining area perfect for entertaining. Ample room for furniture. Tv and internet points, a feature gas fireplace, uPVC double glazed windows and a gas central heated radiator.

DINING ROOM - 2.73m x 2.68m (8'11" x 8'9") A great sized dining room with space for a 6/8 seater dining table. uPVC double glazed sliding patio doors leading out to the rear and a gas central heated radiator.

KITCHEN - 3.13m x 3.02m (10'3" x 9'10") A beautiful and modern kitchen boasting a range of overhead, base and drawer units with square edged work surfaces above. A 1 bowl composite sink and drainer unit, an electric double oven with grill and microwave integrated and a four ring induction hob with extractor hood above, an integral fridge freezer and space and plumbing for a washing machine. Complimentary tiling, a uPVC double glazed window and a gas central heated radiator.

BEDROOM TWO - 3.02m x 3.02m (9'10" x 9'10") A generously sized second double bedroom on the ground floor of the property overlooking the front aspect of the home. A deep storage cupboard housing the recently installed combination boiler, uPVC double glazed window and a gas central heated radiator.



BATHROOM A contemporary family bathroom boasting three piece suite of a low level flush WC, a wall mounted wash hand basin and a panelled bath unit with shower attachments above. Modern tiling, a uPVC obscure double glazed window and a chrome heated towel rail.

FIRST FLOOR

BEDROOM ONE - 4.44m x 3.84m (14'6" x 12'7") A wonderfully large master bedroom offering space for an abundance of furniture, a built in WC, fitted wardrobe, a uPVC double glazed window and a gas central heated radiator.

BEDROOM THREE - 3.26m x 2.02m (10'8" x 6'7") A third sizeable double bedroom overlooking the front aspect of the home. uPVC double glazed window and a gas central heated radiator.

OUTSIDE A large sunny rear garden that is designed over three levels with the first level boasting a spacious lean too accessed off of the dining room and currently being used as a hot tub area and a further patio section perfect for outdoor dining. Steps then lead up to the further two tiers that are laid to lawn.

GARAGE Single garage with a metal up and over door.

Address 'Foxhole Road, Paignton, TQ3 3TA'

Tenure 'Freehold'

Council Tax Band 'C'

EPC Rating '64 | D'

Contact Details

26 Hyde Road
Paignton
Torbay
TQ4 5BY

www.taylorsestates.co.uk

info@taylorsestates.co.uk
01803 663561

Agents Note: These details are meant as a guide only. Any mention of planning permission, loft rooms, extensions etc. does not imply they have all the necessary consents, building control etc. Photographs, measurements, floorplans are also for guidance only and are not necessarily to scale or indicative of size or items included in the sale. Commentary regarding length of lease, maintenance charges etc is based on information supplied to us and may have changed. We recommend you make your own enquiries via your legal representative over any matters that concern you prior to agreeing to purchase.