

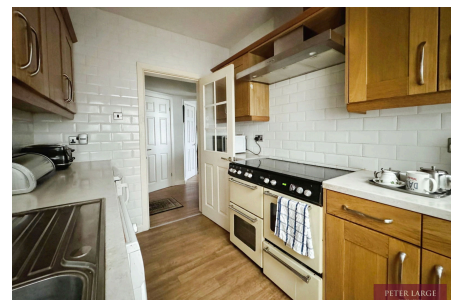
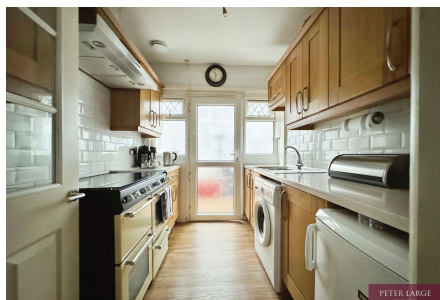
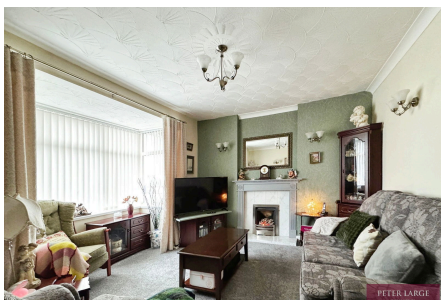
## 11 Molineaux Road, Rhy, LL18 3UA

£175,000

🛏️ 2 🚿 1 🚗 1



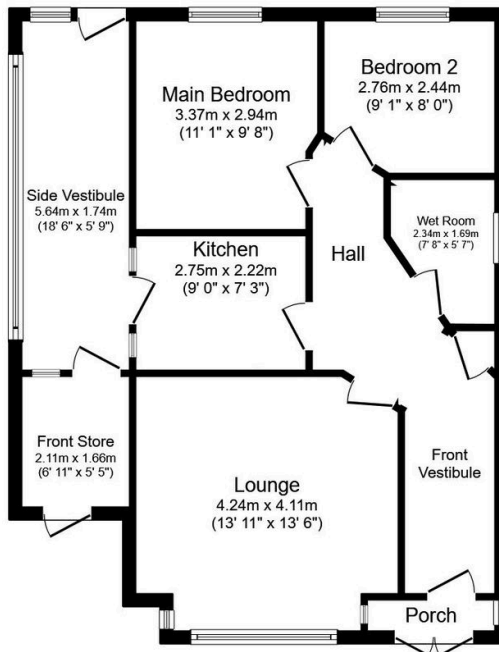
PETER LARGE  
ESTATE AGENTS



Introducing this detached bungalow in a sought-after location, brimming with potential. The property is ideal for those seeking to put their unique stamp on a home that has already benefited from a number of home improvements. The property benefits from a side vestibule, lounge, galley kitchen, rear vestibule leading onto the rear enclosed garden, two bedrooms and wet room. The property is ideally situated, offering residents a host of local amenities within walking distance. Having walking and cycling routes on the doorstep being conveniently close to the seafront, making weekend strolls along the beach a regular activity.

## Key Features

- Two bedroom
- Rear vestibule
- Off street parking for one vehicle
- Freehold
- Council tax - C
- Detached bungalow
- Enclosed rear garden
- Wet room
- EPC - D
- Date 11/12/2024



### Floor Plan

Floor area 71.2 m<sup>2</sup> (766 sq.ft.)

TOTAL: 71.2 m<sup>2</sup> (766 sq.ft.)

This floor plan is for illustrative purposes only. It is not drawn to scale. Any measurements, floor areas (including any total floor area), openings and orientations are approximate. No details are guaranteed, they cannot be relied upon for any purpose and do not form any part of any agreement. No liability is taken for any error, omission or misstatement. A party must rely upon its own inspection(s). Powered by [www.Propertybox.io](http://www.Propertybox.io)