

Connaught Avenue, Plymouth

Guide Price £125,000

🛏 2 🚿 1 🚻 1



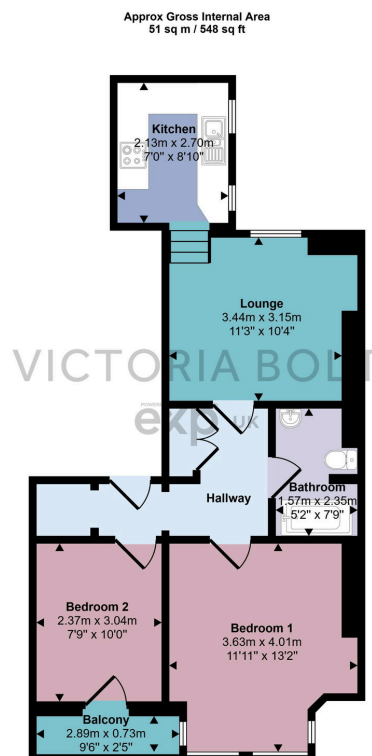
This spacious first-floor flat is ideal for first-time buyers, investors, or downsizers. It features two double bedrooms, a bright lounge, a functional kitchen, and a practical bathroom. There is a small balcony area to sit on in the summer months.

With communal parking at the rear and easy access to local amenities and Plymouth city centre, this property offers affordability and convenience.

Book your viewing today by quoting VB0375.

Key Features

- First floor apartment
- Two double bedrooms
- Well equipped kitchen
- Plenty of storage
- Small balcony
- Please quote VB0375 to book a viewing
- Bright and airy lounge
- Modern bathroom
- Communal parking at the rear
- Close to Mutley Plain



Floorplan

This floorplan is only for illustrative purposes and is not to scale. Measurements of rooms, doors, windows, and any items are approximate and no responsibility is taken for any error, omission or mis-statement. Icons of items such as bathroom suites are representations only and may not look like the real items. Made with Made Snappy 360.