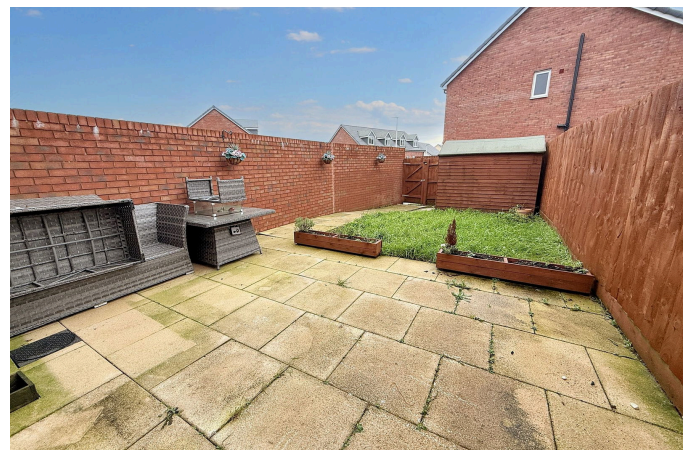


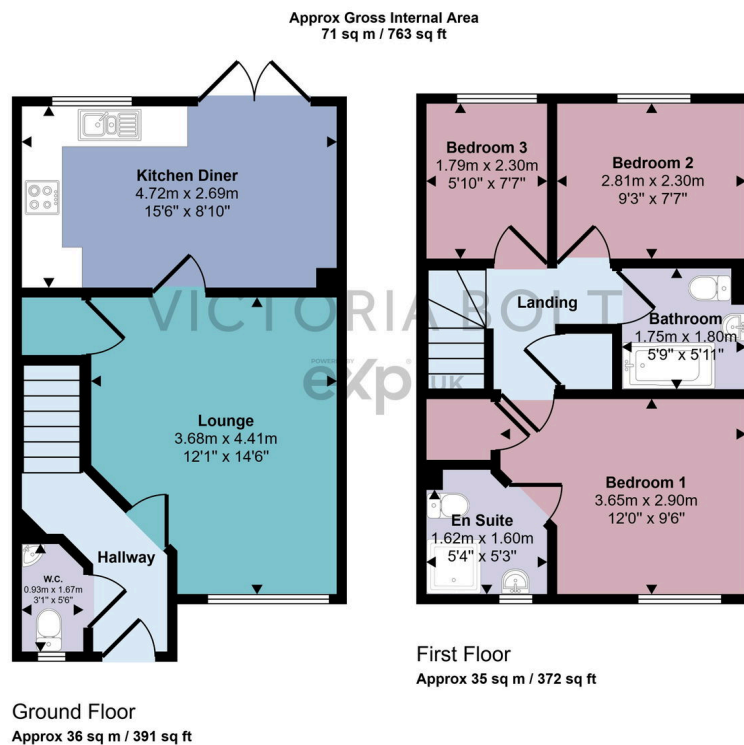
## Evergreen Walk, Ivybridge

Guide Price £275,000

3 3 1



- End of terrace house on the Western side of Ivybridge
- No onward chain
- Built three years ago, so benefits from 7 years of the NHBC warranty
- Lounge & kitchen/diner
- Parking for two cars right next to the property, with an electric car charger
- To arrange a viewing, please quote VB0375
- Three bedrooms (2dbls;1 sng)
- Overlooks open fields
- Downstairs WC & to master bedroom
- Southerly facing rear garden laid to patio and lawn



This floorplan is only for illustrative purposes and is not to scale. Measurements of rooms, doors, windows, and any items are approximate and no responsibility is taken for any error, omission or mis-statement. Icons of items such as bathroom suites are representations only and may not look like the real items. Made with Made Snappy 360.

To arrange a viewing, please quote VB0375. **NO ONWARD CHAIN.** This end-of-terrace property is located on the western side of Ivybridge, on the edge of the sought-after Harford Mews estate. The accommodation includes a bright lounge, a spacious kitchen/diner, and a convenient downstairs WC. Upstairs, there are three bedrooms (two doubles and one single), a family bathroom, and an ensuite shower room to the master bedroom.

The property benefits from fabulous views over the fields to the front, parking for two cars, and a level, southerly-facing rear garden, perfect for enjoying the sun.