



Victoria Bolt
estate agents POWERED BY **exp** UK

Abbot Road, Ivybridge

Guide Price £270,000

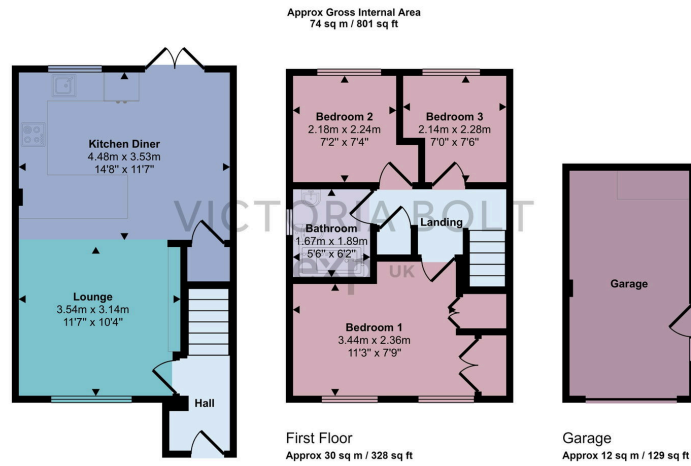
🛏️ 3 🚿 1 🚗 1



- End of terrace house in fantastic condition
- Bespoke hand painted kitchen
- Three bedrooms
- Situated on a corner plot, so has a good size garden
- Driveway parking
- Open plan living area
- Dining area
- Modern bathroom
- Garage accessed from the garden



This well-presented three-bedroom end-of-terrace house is situated on Abbot Road, Ivybridge. The accommodation downstairs is open-plan with a bespoke kitchen/dining and lounge area. Upstairs, there are three bedrooms and a family bathroom. The property is on a corner plot; it benefits from a southerly-facing garden, a garage and a driveway.



This floorplan is only for illustrative purposes and is not to scale. Measurements of rooms, doors, windows, and any items are approximate and no responsibility is taken for any error, omission or mis-statement. Icons of items such as bathroom suites are representations only and may not look like the real items. Made with Made Snappy 360.

