

Drake Avenue, Ivybridge

Fixed Price £88,000

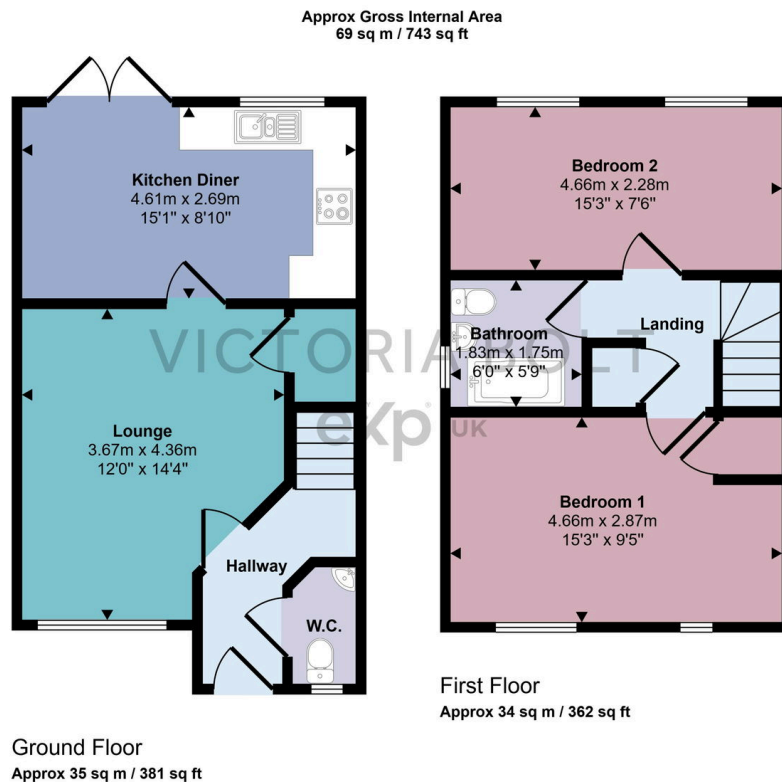
2 2 1



To arrange a viewing, please quote VB0375. This charming semi-detached home in South Hams countryside offers a **40% shared ownership**, ideal for first-time buyers. The ground floor includes a bright lounge, a modern kitchen/diner with doors leading to an enclosed garden, and a downstairs WC. Upstairs, there are two double bedrooms—one with built-in storage and one with scenic views—and a stylish bathroom. Outside, the property features a driveway for two cars and a private garden with a patio. Located in Ivybridge near Dartmoor National Park, the home is close to schools, shops, and transport links for easy access to Plymouth and beyond.

Key Features

- 40% shared ownership
- No onward chain
- Modern fitted kitchen/diner
- Spacious bedrooms with stunning views
- Driveway parking for two cars
- To arrange a viewing, please quote VB0375
- Charming two-bedroom semi-detached house
- Convenient downstairs wc
- Enclosed rear garden
- Proximity to amenities and transport links



This floorplan is only for illustrative purposes and is not to scale. Measurements of rooms, doors, windows, and any items are approximate and no responsibility is taken for any error, omission or mis-statement. Icons of items such as bathroom suites are representations only and may not look like the real items. Made with Made Snappy 360.