

## Kerswell Close, Ivybridge

Guide Price £220,000

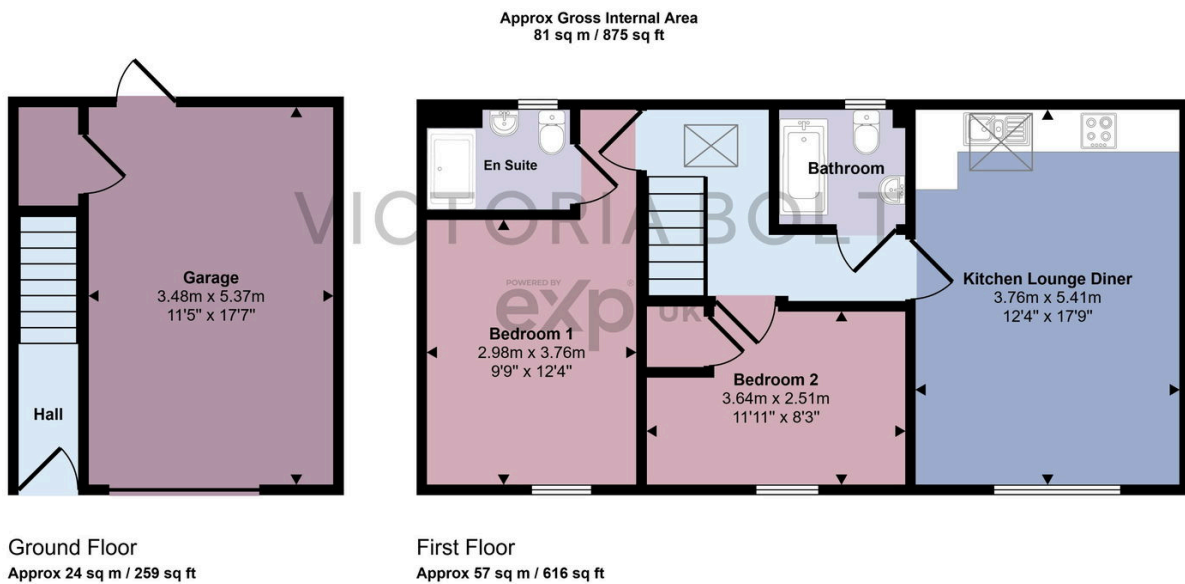
🛏️ 2 🚿 2 🛋️ 1



This charming detached coach house features a bright open-plan living, dining, and kitchen area, two double bedrooms (including a master bedroom with ensuite), and a stylish family bathroom. This home also benefits from parking, a garage, and a sunny southerly-facing garden, offering modern living in a peaceful cul-de-sac location. Perfect for those seeking comfort, convenience, and a low-maintenance lifestyle. Please quote VB0375 for a viewing.

## Key Features

- Modern detached coach house in Lucerne Fields
- Open-plan living, dining, and kitchen area
- Master bedroom with ensuite
- Parking and garage
- Located in a peaceful cul-de-sac
- To arrange a viewing, please quote VB0375
- Two double bedrooms
- Family bathroom
- Southerly-facing garden
- 5 years left on the NHBC warranty



This floorplan is only for illustrative purposes and is not to scale. Measurements of rooms, doors, windows, and any items are approximate and no responsibility is taken for any error, omission or mis-statement. Icons of items such as bathroom suites are representations only and may not look like the real items. Made with Made Snappy 360.