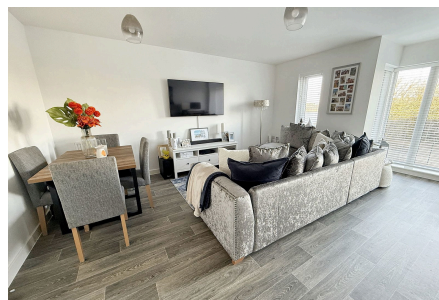


Batts Combe Mews, Plymstock

Offers Over £168,500

🛏️ 1 🚗 1 🛋️ 1



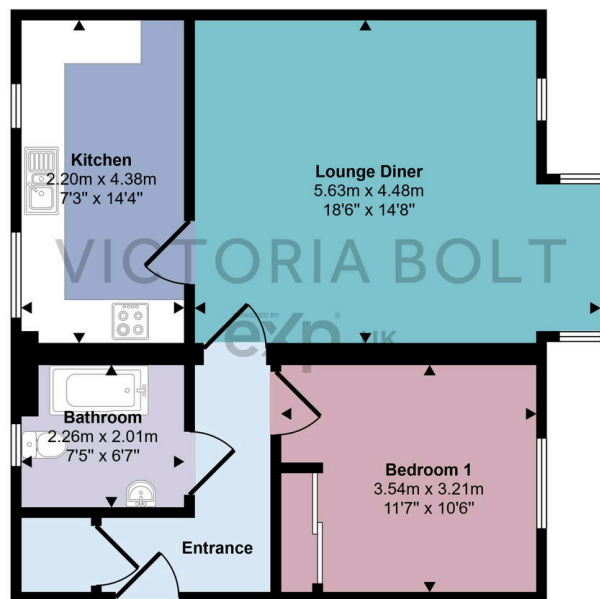
To arrange a viewing, please quote VB0375.

This stylish one-bedroom flat in the popular Saltram Meadows development offers modern, low-maintenance living in a convenient location. The property features a spacious lounge-diner, a well-equipped kitchen, a generously sized bedroom, and a contemporary bathroom. There is a parking space for one car and ample visitors spaces. Ideally situated near local amenities and transport links, this flat is perfect for first-time buyers, downsizers, or investors. Schedule a viewing today!

Key Features

- To arrange a viewing, please quote VB0375
- Spacious lounge-diner, ideal for relaxation and entertaining
- Generously sized bedroom with fitted wardrobes
- Bright and airy layout with plenty of natural light
- Situated in the sought-after Saltram Meadow development
- Modern and stylish design throughout
- Well-equipped kitchen with ample storage and workspace
- Contemporary bathroom
- Low-maintenance property, perfect for hassle-free living
- Ideal for first-time buyers, downsizers, or as an investment property

Approx Gross Internal Area
58 sq m / 626 sq ft



Floorplan

This floorplan is only for illustrative purposes and is not to scale. Measurements of rooms, doors, windows, and any items are approximate and no responsibility is taken for any error, omission or mis-statement. Icons of items such as bathroom suites are representations only and may not look like the real items. Made with Made Snappy 360.