



23 Alice Batt Road,
Offers In Region Of £425,000

3 2 1



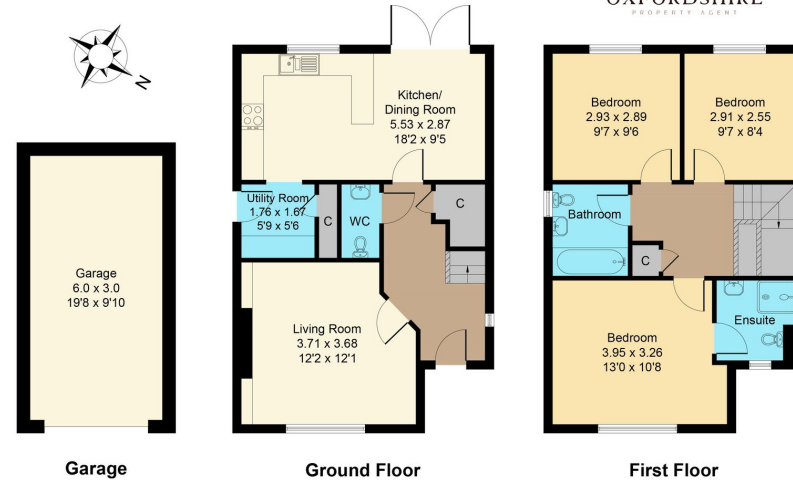
- Detached home
- Prime position on development
- Overlooking woodland walk and green space
- No through road
- 3 double bedrooms
- 2 bathrooms
- High specification kitchen/ breakfast room
- South Westerly facing garden
- Garage and driveway parking





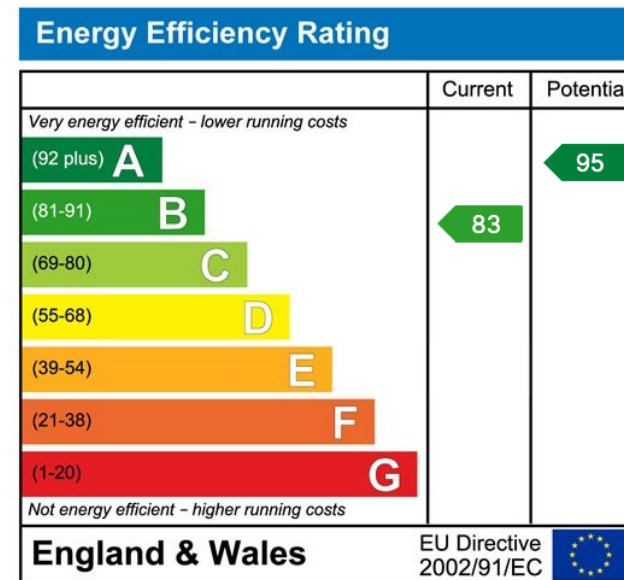
Approximate Gross Internal Area = 106.57 sq m / 1147 sq ft

THE OXFORDSHIRE PROPERTY AGENT



This floorplan is for illustrative purpose only and is not drawn to scale. Measurement, floor-areas, openings and orientations area approximate. They should not be relied upon for any purpose and do not form any part of an agreement. No liability is taken for any error of mis-statement. All parties must rely on their own inspections.

This immaculately presented 3 bedroom detached home, is situated in a prime position on the popular Windrush Place development and offers spacious and well laid out accommodation throughout. The property benefits from double bedrooms, generous lounge, an attractive kitchen/breakfast room with utility room, and South Westerly facing garden.



oxfordshirepropertyagent.co.uk

Sell Your Home For Only

0.75%

Your own dedicated

Agent

1 Month Contracts

5 New sellers a month

