





# Collingwood Court, 51, Collingwood Rise

£200,000

2 1 1





Discover this delightful two-bedroom apartment, nestled in the heart of vibrant Folkestone. This chain-free property offers a fantastic opportunity for first-time buyers, professionals, or investors seeking a contemporary coastal lifestyle.

The interior is thoughtfully designed, boasting two spacious bedrooms, perfect for relaxation and privacy. The modern open-plan living dining area is ideal for entertaining guests or simply unwinding after a long day. The sleek, modern kitchen is equipped with everything you need to whip up delicious meals.

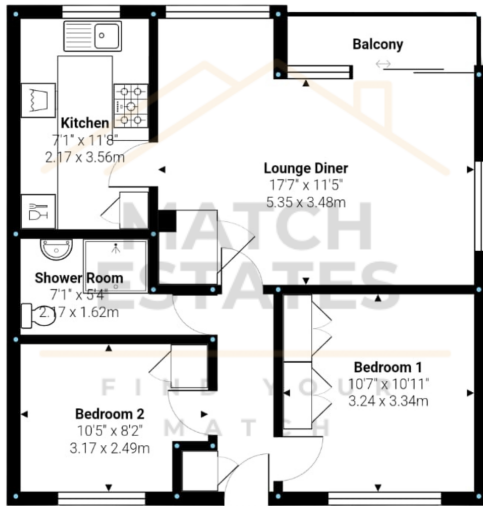
The private balcony offers breathtaking sea views, providing a tranquil space to relax and unwind. Imagine enjoying your morning coffee while watching the sunrise over the English Channel or sipping a glass of wine as the sun sets.

Located just moments from Folkestone West Station, this property offers excellent transport links to London and the wider Kent area. The town centre and seafront promenade are also within easy reach, providing a wealth of shops, restaurants, and leisure activities.

This apartment benefits from a long lease, offering peace of mind for the future. Residents' parking is available on a first-come, first-served basis.

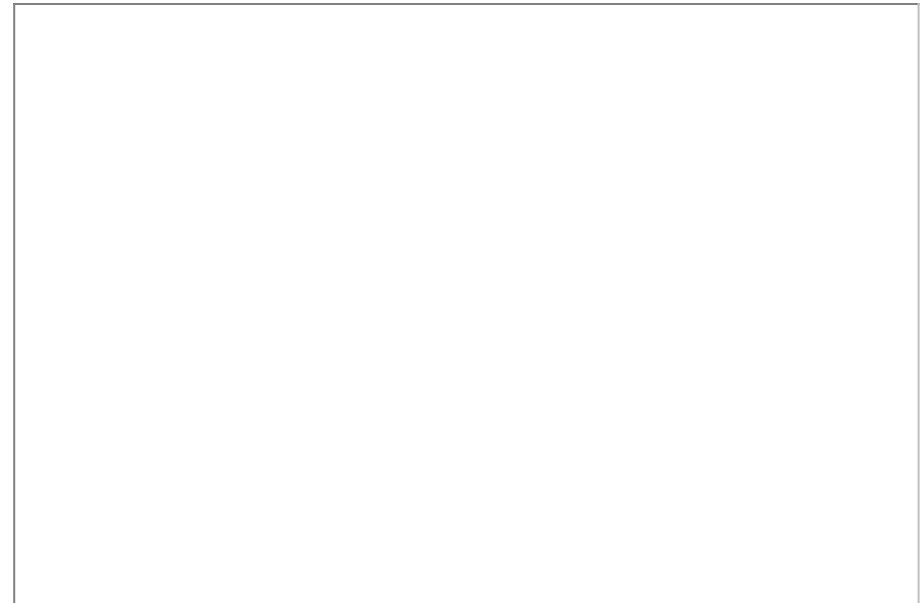
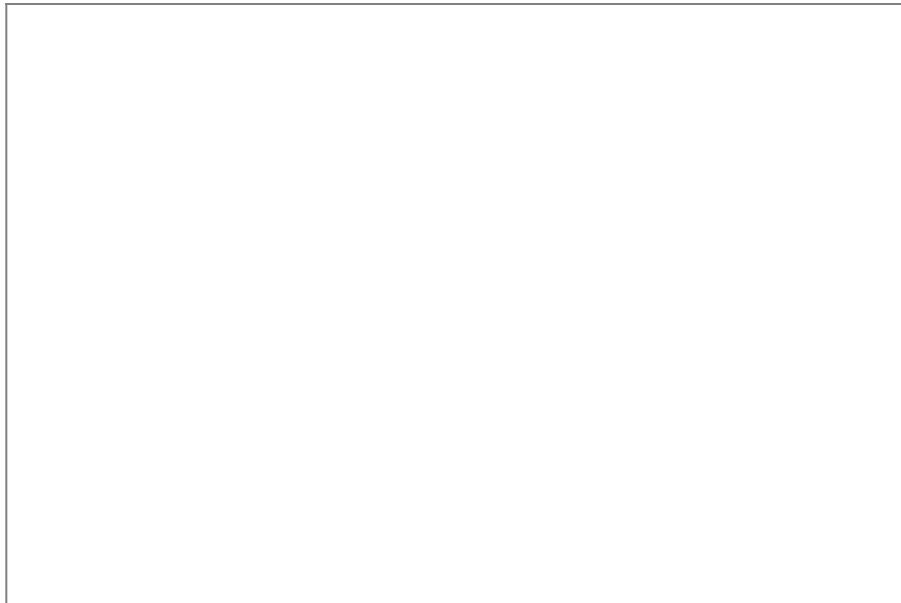
Don't miss this opportunity to own a piece of the stunning Folkestone coastline.





Measurements are approximate and for display purposes only

- Chain Free
- Sea Views
- Top Floor Apartment
- Residents Parking On First Come First Serve Basis
- Balcony
- Ready To Move Straight Into
- Long Lease
- Close to Folkestone West Station



01303 475085

[www.match-estates.co.uk](http://www.match-estates.co.uk)

Match Estates LTD, trading as Match Estates, is a private limited company: 15509408  
Registered Address: B3 Bouverie House, Folkestone, Kent, CT20 1AE  
VAT Registration Number: 464 1921 89

