



**MATCH  
ESTATES**

FIND YOUR  
MATCH



Margaret Street, Folkestone, Kent  
£170,000

2 2 1





This charming two-bedroom maisonette on Margaret Street offers a rare opportunity for coastal living, just a one-minute walk from the picturesque Folkestone Harbour. With a share of freehold, this property boasts its own separate entrance, ensuring privacy and independence.

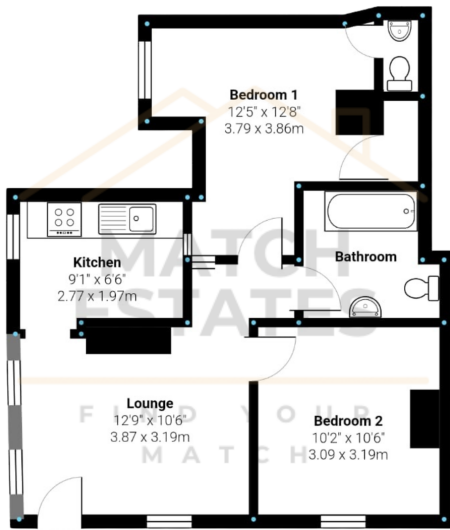
Upon entering, you're welcomed by a light and airy living room, bathed in natural light from three large windows. Fitted blinds are included, and the room has been recently re-carpeted, providing a cosy and modern feel. The adjoining kitchen, conveniently located off the living room, comes equipped with a high-quality Neff oven and gas hob, perfect for cooking up a seaside-inspired feast.

The secondary bedroom, situated to the right of the living room, is spacious and versatile, ideal for guests, a home office, or even a dressing room. The bathroom is well-appointed with a bath and shower attachment, a WC, and a basin, finished in attractive tiles that complement the property's classic style.

The principle bedroom, positioned towards the rear, is generously sized and benefits from a fitted wardrobe and a separate WC. With the appropriate permissions, this space could potentially be converted into a shower room en-suite, adding even more appeal to this wonderful home.

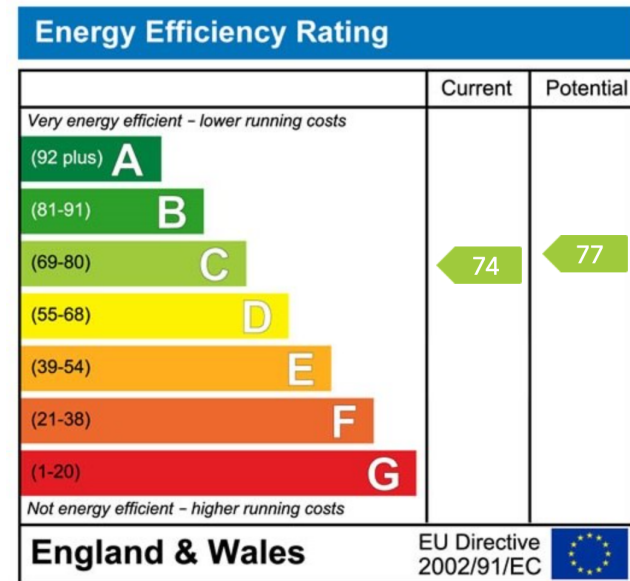
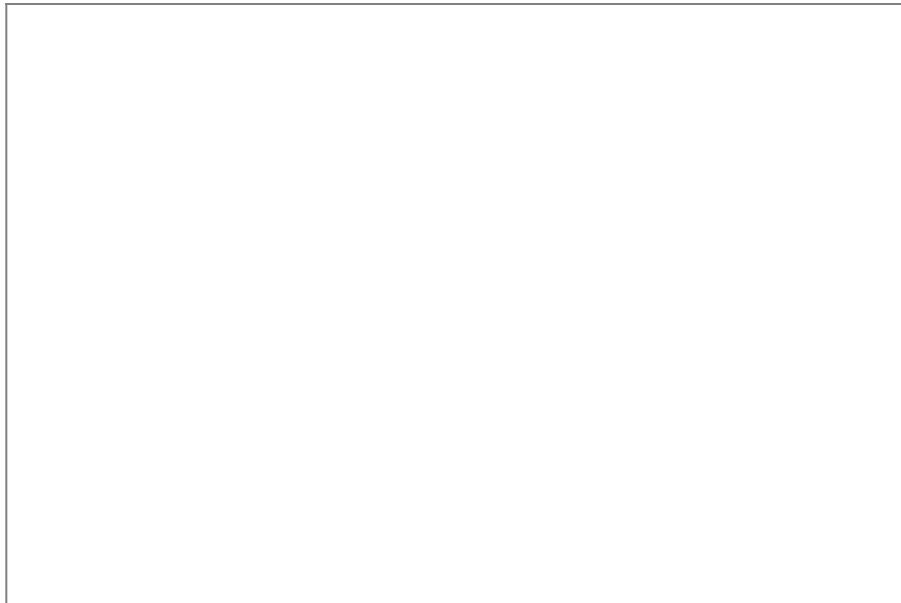
Perfect for anyone looking to enjoy the vibrant seaside lifestyle, this maisonette in Folkestone offers the best of coastal living with a touch of luxury and convenience.





Measurements are approximate and for display purposes only

- Share Of Freehold
- Two Double Bedrooms
- Ensuite Toilet Room To Principal Bedroom
- Close To Folkestone Harbour
- Permit Parking Area
- Separate Entrance
- Small Outside Space
- New Carpet In The Lounge



01303 475085

[www.match-estates.co.uk](http://www.match-estates.co.uk)

Match Estates LTD, trading as Match Estates, is a private limited company: 15509408  
 Registered Address: B3 Bouverie House, Folkestone, Kent, CT20 1AE  
 VAT Registration Number: 464 1921 89

