



# Castle Hill Avenue, Folkestone, Kent

Offers In Region Of £250,000

2 1 1



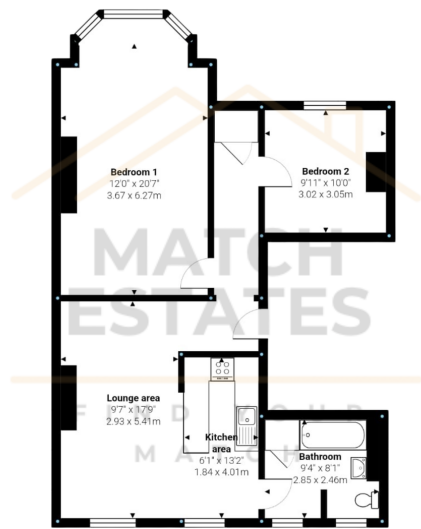
Match Estates are thrilled to present this beautifully refurbished and generously proportioned apartment, occupying the entire first floor of an elegant building in Folkestone's sought-after West End. This stunning property benefits from the rare advantage of an allocated parking space and is ideally located within walking distance of the vibrant town centre and Folkestone Central station, offering exceptional convenience.

The property is perfectly situated for commuters, with High-Speed 1 (HS1) services from Folkestone Central station providing journey times to London St Pancras International in under an hour. Whether travelling for work or leisure, this excellent connectivity makes Folkestone an ideal blend of coastal charm and city accessibility.

Beautifully presented throughout, the apartment features two well-proportioned bedrooms, a spacious living room seamlessly flowing into a brand-new open-plan kitchen, and a stylish, modern bathroom suite. The property benefits from double glazing throughout, enhancing energy efficiency and ensuring a quiet, comfortable living environment. Refurbished to an exceptional standard by the current owner, this home offers contemporary living with timeless appeal.

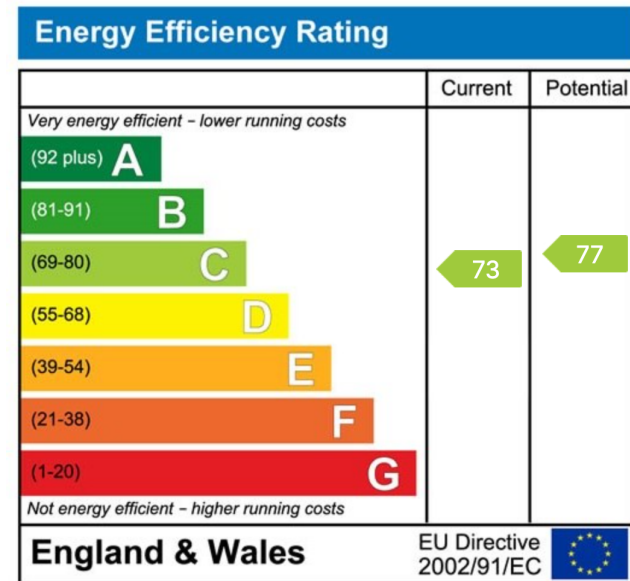
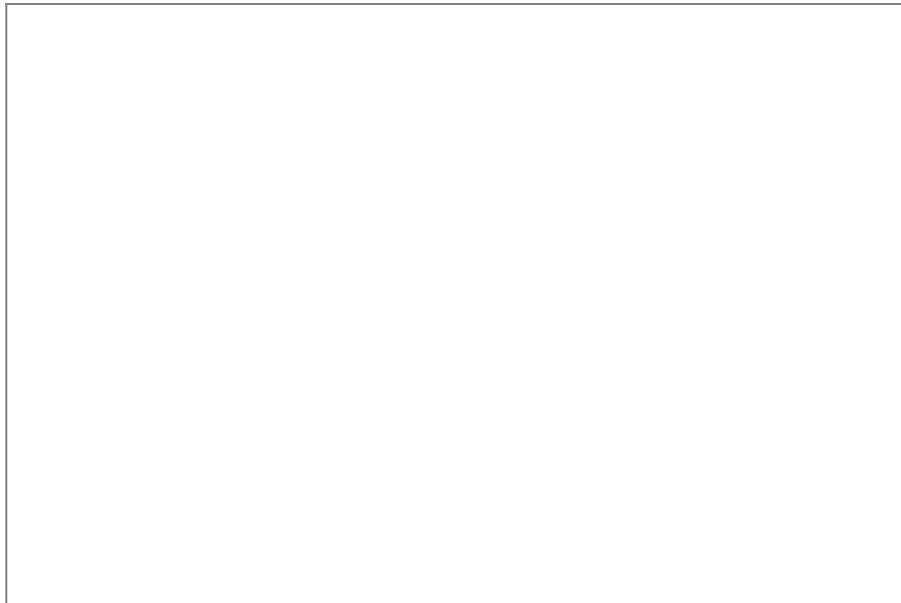
Early viewing is highly recommended to fully appreciate all this outstanding home has to offer.





Measurements are approximate and for display purposes only

- Fantastic Sized Two Bedroom Apartment
- Recently Refurbished
- Close To Folkestone Central Station
- Two Double Bedrooms
- Off Road Parking
- EPC Rating C
- Open Plan Living Space
- Long Lease



01303 475085

[www.match-estates.co.uk](http://www.match-estates.co.uk)

Match Estates LTD, trading as Match Estates, is a private limited company: 15509408  
 Registered Address: B3 Bouverie House, Folkestone, Kent, CT20 1AE  
 VAT Registration Number: 464 1921 89

