

## Paget Close, Horsham

Guide Price £650,000

3 1 2



A spacious Three Double Bedroom Detached Family Home in a small Cul de Sac, offering Excellent Potential to Extend (stpp), a South West Facing Garden and No Onward Chain.

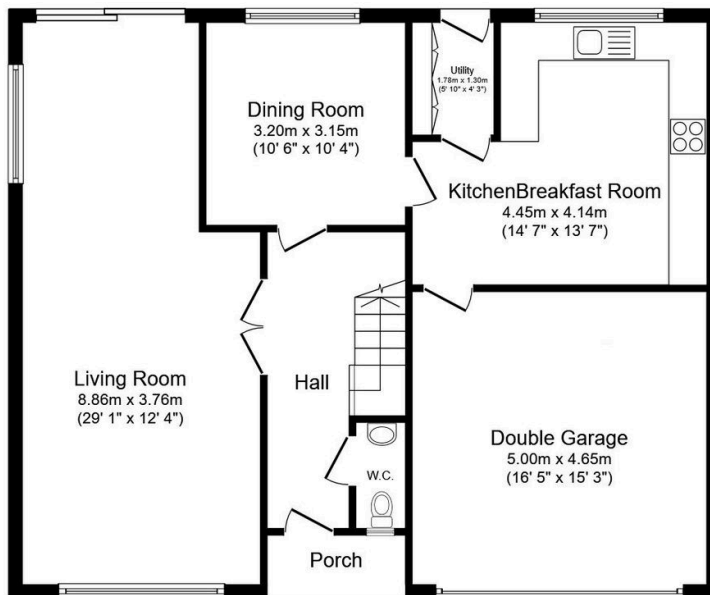
Tenure: Freehold

Council Tax: Band F

EPC Rating : Current D - Potential C

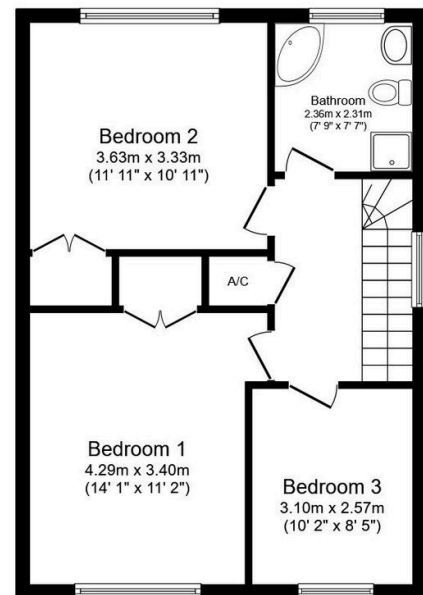
## Key Features

- Watch Our Video Tour
- Three Double Bedrooms
- South West Facing Garden
- 29ft Triple Aspect Living Room
- Excellent Potential To Extend (stpp)
- Extended Detached Family Home
- No Onward Chain
- Cul De Sac Location
- 14ft x 13ft Kitchen Breakfast Room
- 16ft x 15ft Double Garage & Driveway



### Ground Floor

Floor area 95.7 m<sup>2</sup> (1,030 sq.ft.)



### First Floor

Floor area 53.6 m<sup>2</sup> (577 sq.ft.)

TOTAL: 149.2 m<sup>2</sup> (1,606 sq.ft.)

This floor plan is for illustrative purposes only. It is not drawn to scale. Any measurements, floor areas (including any total floor area), openings and orientations are approximate. No details are guaranteed, they cannot be relied upon for any purpose and do not form any part of any agreement. No liability is taken for any error, omission or misstatement. A party must rely upon its own inspection(s). Powered by [www.Propertybox.io](http://www.Propertybox.io)