

Linden House, Horsham

Guide Price £400,000

🛏️ 2 🚿 2 🛋️ 1



A stunning Top Floor Apartment located in Horsham Town Centre, boasting a 31ft Open Plan Living Area, 28ft South West facing Balcony, Gated Parking and Lifts to all floors.

Tenure: Leasehold

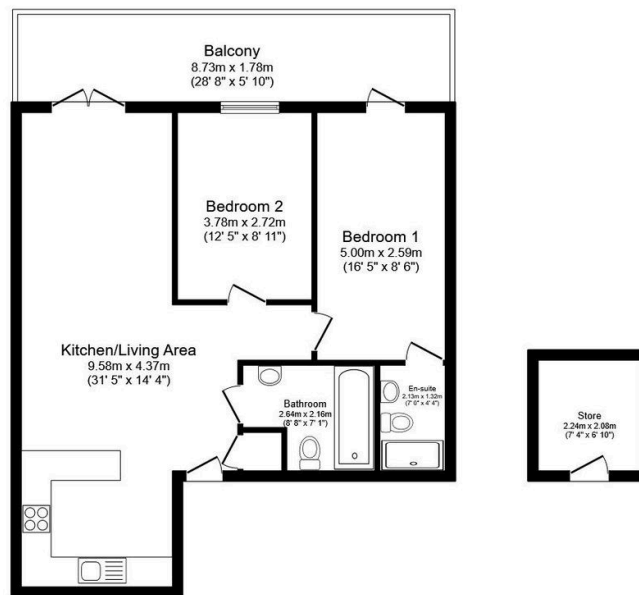
Lease Length: 125 years from January 2015 (116 years)

Council Tax: Band C

EPC Rating: Current B - Potential B

Key Features

- Watch Our Video Tour
- Secure Gated Parking
- Luxurious Family Bathroom
- Two Generous Double Bedrooms
- Town Centre Location
- 28ft South West Facing Balcony
- 31ft Open Plan Living Area
- En Suite To Master Bedroom
- 7'4 x 6'10 Private Lockable Store
- Lifts To All Floors



Floor Plan

Floor area 69.0 m² (743 sq.ft.)

This floor plan is for illustrative purposes only. It is not drawn to scale. Any measurements, floor areas (including any total floor area), openings and orientations are approximate. No details are guaranteed, they cannot be relied upon for any purpose and do not form any part of any agreement. No liability is taken for any error, omission or misstatement. A party must rely upon its own inspection(s). Powered by www.Propertybox.io