

Dilton Marsh, Westbury, BA13 4BP

Offers Over £550,000

4 2 3



Exceptional! If you have been searching for the perfect blend of comfort and luxury, look no further. This stunning extended 4-bedroom detached home situated on the edge of Dilton Marsh offers a spacious living room, dining room, elegant conservatory, and a kitchen adorned with a sleek Kenwood Stove. This home is perfect for hosting gatherings and creating unforgettable memories with family and friends.

Key Features

- Exquisite 4 Bedroom Detached Family Home
- Two Double Bedrooms & Single Room
- Landscaped Garden & Summer House
- Abundance of Parking Space
- Excellent Sized Main Bedroom with En-Suite
- Family Bathroom & Downstairs Cloakroom
- Two Outbuildings & a Single Garage
- QUOTE REF EB0191 - Emma Butcher

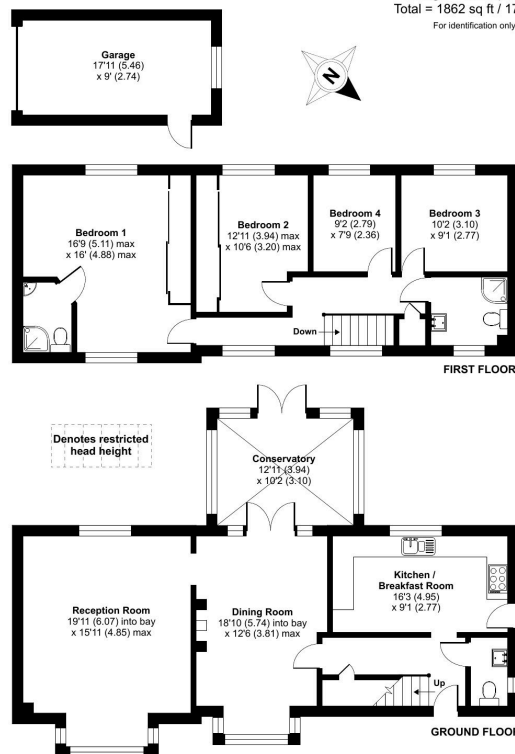
Dutts, Dilton Marsh, Westbury, BA13

Approximate Area = 1700 sq ft / 157.9 sq m

Garage = 162 sq ft / 15 sq m

Total = 1862 sq ft / 172.9 sq m

For identification only - Not to scale



Floor plan produced in accordance with RICS Property Measurement Standards incorporating International Property Measurement Standards (IPMS2 Residential). © nrichcom 2024. Produced for Emma Butcher powered by exp. REF: 1177619