

The Tallet, Dean Street Farm, Dean

Guide Price £250,000

1 1 1

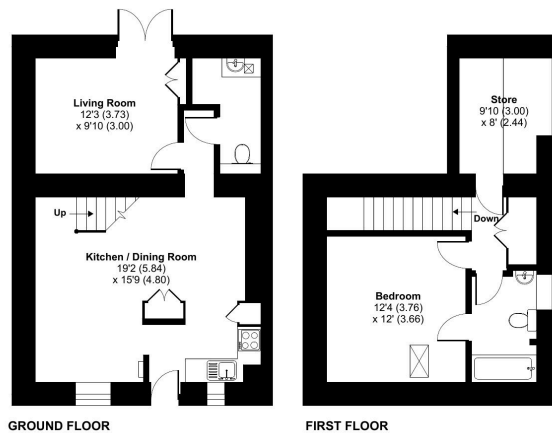


- Cosy 1/2 Bedroom Converted Barn
- Open Plan Kitchen Diner
- Scope to design the garden
- Plethora of Character
- Close links to Shepton Mallet & Frome
- Scope for internal extension and adding personal touch
- Main Bedroom with Jack & Jill Bathroom
- Ground source heat pump and underfloor heating throughout
- No Onward Chain
- Quote Ref EB0191 - Emma Butcher

Dean Street Farm, Dean, Shepton Mallet, BA4

Approximate Area = 881 sq ft / 81.8 sq m

For identification only - Not to scale



Floor plan produced in accordance with RICS Property Measurement 2nd Edition, incorporating International Property Measurement Standards (IPMS2 Residential). © richcom 2024. Produced for Emma Butcher powered by exp. REF: 1210270

QUOTE REF EB0191 If you have been dreaming of owning a piece of history in a Hamlet, look no further than this enchanting end-terrace barn conversion in Dean, near Shepton Mallet. Having been converted in the early 2000's, this property exudes character and charm at every turn.