



CHARLIE SKIPP
POWERED BY
exp UK

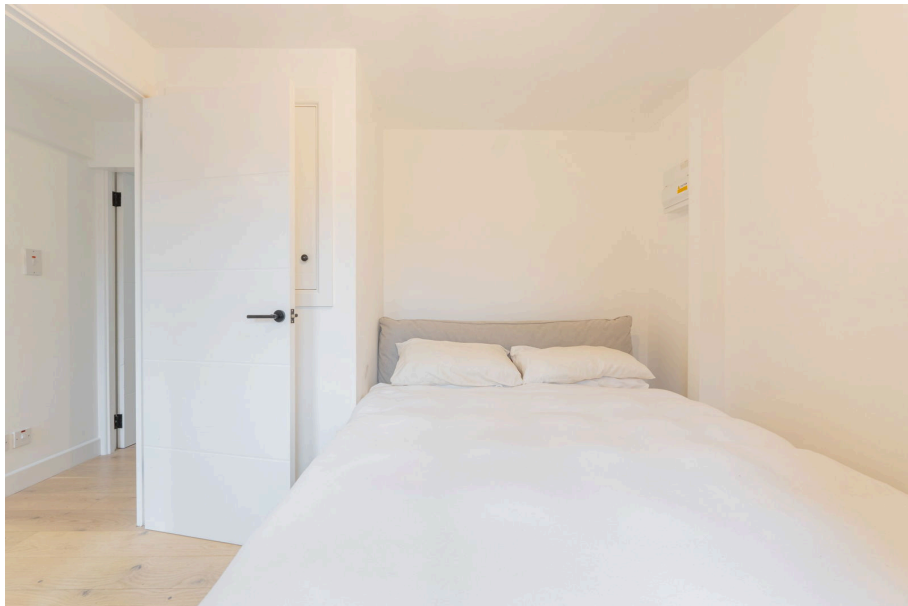
Flat 9, Stevens Terrace, 45, St. Pauls Square

Guide Price £160,000

🛏 1 🍳 1 🚪 1

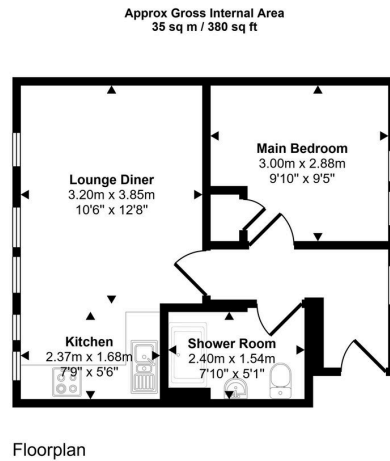


- CS1106
- One Bedroom Apartment
- Second Floor Apartment
- Situated On St. Pauls Square
- Open Plan Lounge And Kitchen
- Views Over The Square
- Recently Refurbished
- Perfect For First Time Buyers Or Investors
- City Centre Living
- 387 Sq. Ft.

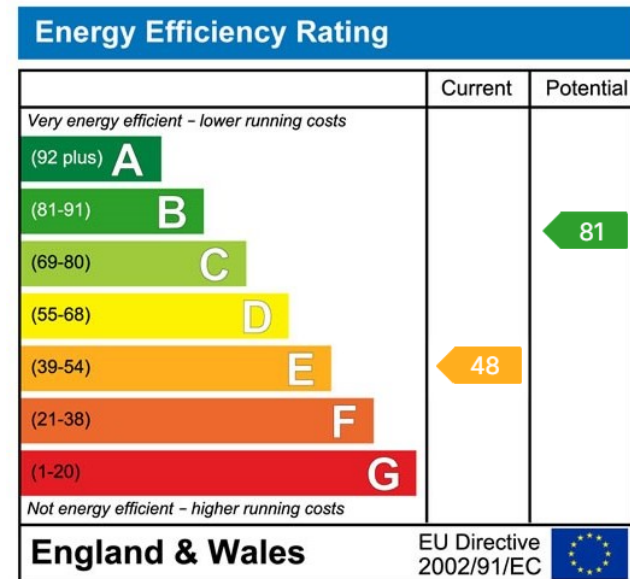


CS1106

Welcome to Stevens Terrace, an exceptional opportunity for investors or first-time buyers. This beautifully presented and thoughtfully improved one-bedroom, second-floor apartment offers a prime position overlooking the highly sought-after St. Paul's Square in the Jewellery Quarter.



This floorplan is only for illustrative purposes and is not to scale. Measurements of rooms, doors, windows, and any items are approximate and no responsibility is taken for any error, omission or mis-statement. Icons of items such as bathroom suites are representations only and may not look like the real items. Made with Made Snappy 360.



CHARLIE SKIPP is an approved agent at eXp World UK Limited, trading as eXp UK, registered at C/O Corporation Service Company (UK) Limited, 5 Churchill Place, 10th Floor, London, United Kingdom, E14 5HU. Company number 12016573. VAT no 327 4120 29.

If you have instructed another agent to sell your house and instruct eXp World Ltd to sell your property at the same time, then you could be liable to pay both agents. It is recommended that you check the contract you have with your current agent.