




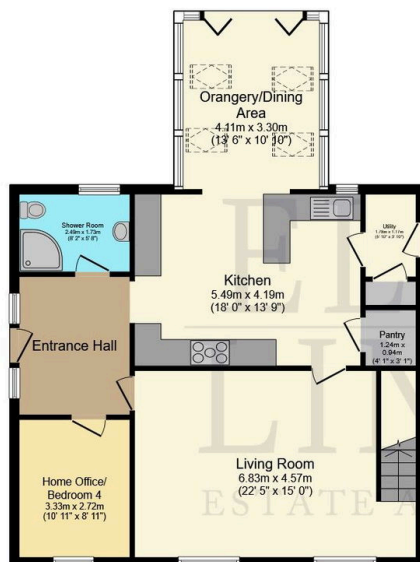
Bay Tree House, Winford.

£575,000

 4  2  2

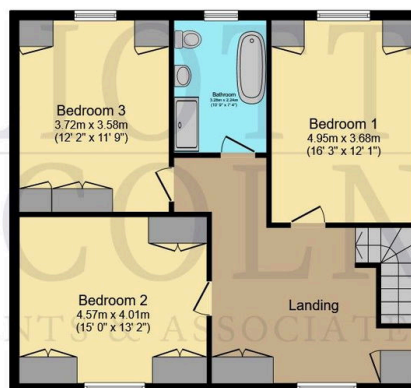


- Future Proofed with Solar Panels - Energy Efficiency Maximised. EPC B.
- Four well-proportioned bedrooms and two stylish bathrooms.
- Stunning Orangery with bifold doors and garden views, seamlessly bringing the outside in.
- Generous 0.15 acre plot with a private and well-maintained garden.
- Close to beautiful beaches, local amenities, and excellent transport links including bus routes.
- Contemporary yet timeless design with a nautical-inspired interior.
- Bespoke solid-wood hand-built kitchen with elegant craftsmanship.
- Spacious lounge with tasteful decor and an abundance of natural light.
- Idyllic semi-rural location, with countryside walks and coastal trails nearby.
- A much-loved family home for the past 10 years with a garage, summer house and shed.



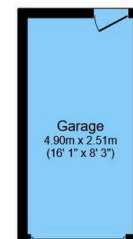
Ground Floor

Floor area 85.8 sq.m. (924 sq.ft.)



First Floor

Floor area 73.7 sq.m. (793 sq.ft.)



Garage

Floor area 11.8 sq.m. (127 sq.ft.)

TOTAL: 171.4 sq.m. (1,844 sq.ft.)

This floor plan is for illustrative purposes only. It is not drawn to scale. Any measurements, floor areas (including any total floor area), openings and orientations are approximate. No details are guaranteed, they cannot be relied upon for any purpose and do not form any part of any agreement. No liability is taken for any error, omission or misstatement. A party must rely upon its own inspection(s). Powered by www.Propertybox.io

Nestled in the picturesque surroundings of Winford, Bay Tree House is an exceptional four-bedroom residence that seamlessly blends contemporary elegance with timeless charm. Originally a 1930s bungalow, the property has been thoughtfully rebuilt and extended to create a spacious and immaculately finished home.