




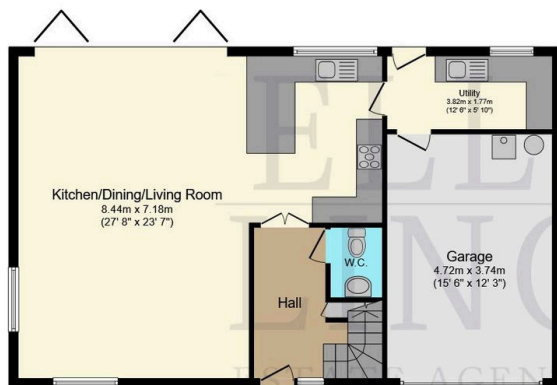
Oakdown, East Cowes.

£550,000

 4  3  1

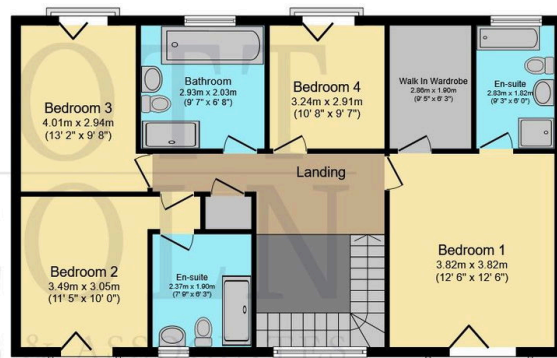


- A principal suite with vaulted ceiling, walk-in dressing room and luxurious en-suite
- Bifold doors and glazed Juliette balconies to all bedrooms
- Open-plan L-shaped reception room with access to a large composite deck
- Integral garage with electric door and utility access
- Moments from East Cowes Marina, Waitrose, and Red Funnel ferry to the mainland
- Stunning views across West Cowes Marina and the Solent
- Underfloor heating to the ground floor
- High-spec kitchen with striking cabinetry and quartz worktops
- Low-maintenance landscaped garden with enclosed lawn and shrub borders
- Local transport links and schools are all in easy reach



Ground Floor

Floor area 91.7 sq.m. (988 sq.ft.)



First Floor

Floor area 91.7 sq.m. (988 sq.ft.)

Total floor area: 183.5 sq.m. (1,975 sq.ft.)

This floor plan is for illustrative purposes only. It is not drawn to scale. Any measurements, floor areas (including any total floor area), openings and orientations are approximate. No details are guaranteed, they cannot be relied upon for any purpose and do not form any part of any agreement. No liability is taken for any error, omission or misstatement. A party must rely upon its own inspection(s). Powered by www.Propertybox.io

A striking and contemporary detached residence built in 2018, Oakdown stands as an exceptional example of modern coastal architecture on the sought-after northern edge of the Isle of Wight. With a commanding presence and views across West Cowes Marina and the Solent, this four-bedroom home offers outstanding design, an uncompromising specification, and a seamless flow between inside and out.