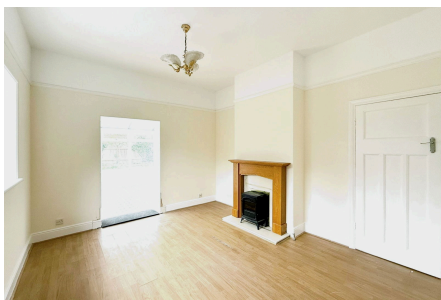


Heath Gardens, Lake, Isle of Wight

£250,000

 2  1  2



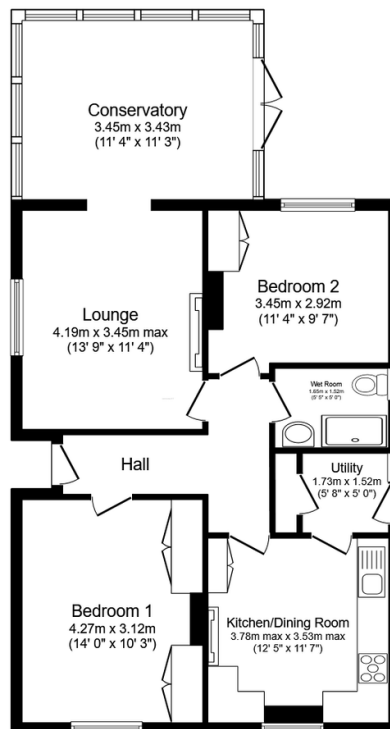
Exceptional Two-Bedroom Detached Bungalow in Good Condition.

A two-bedroom detached bungalow offering a rare opportunity for buyers seeking a turn-key home in a sought-after convenient location. With a brand-new roof, newly fitted fascia and gutters, and fresh internal and external decoration, this property is in great condition and ready for its next owner.

Offering spacious and light-filled living, the home features a conservatory, a well-maintained garden, and the added convenience of off-street parking. Double glazing and gas central heating ensure comfort and energy efficiency all year round.

Key Features

- Open House Event - Saturday 8th February 10am - 12:30pm
- Freshly Decorated & New Roof, Guttering and Fascia
- Utility Room
- Parking for 2-3 Cars
- Close to Local Amenities & Train Station
- Vacant Possession
- Gas Central Heating & Double Glazing
- West Facing Enclosed Garden
- Large Heated Conservatory
- No Onward Chain



TOTAL: 83.7 m² (901 sq.ft.)

This floor plan is for illustrative purposes only. It is not drawn to scale. Any measurements, floor areas (including any total floor area), openings and orientations are approximate. No details are guaranteed, they cannot be relied upon for any purpose and do not form any part of any agreement. No liability is taken for any error, omission or misstatement. A party must rely upon its own inspection(s). Powered by www.Propertybox.io