




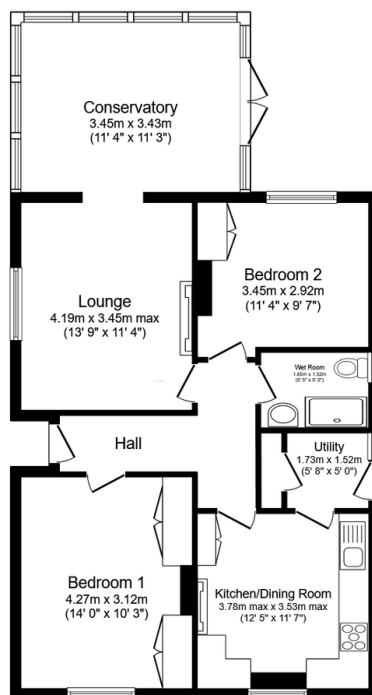
Heath Gardens, Lake, Isle of Wight, P036 8PQ

£315,000

 2  1  2



- Freshly Decorated & New Roof
- Gas Central Heating & Double Glazing
- Double Size Bedrooms
- Wet Room
- Utility Room
- West Facing Garden
- Parking for 2-3 Cars
- Large Heated Conservatory
- Close to Local Amenities & Train Station
- No Onward Chain



TOTAL: 83.7 m² (901 sq.ft.)

This floor plan is for illustrative purposes only. It is not drawn to scale. Any measurements, floor areas (including any total floor area), openings and orientations are approximate. No details are guaranteed, they cannot be relied upon for any purpose and do not form any part of any agreement. No liability is taken for any error, omission or misstatement. A party must rely upon its own inspection(s). Powered by www.Propertybox.io

A detached bungalow with a recent new roof, parking, enclosed rear garden, in a tucked away and quiet location only minutes from amenities and coastal path walks. Offered with no onward chain and with potential - some neighbours have extended into the roof space!