


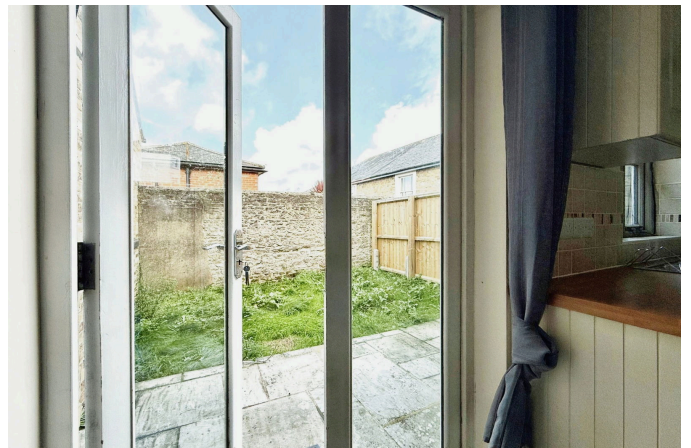


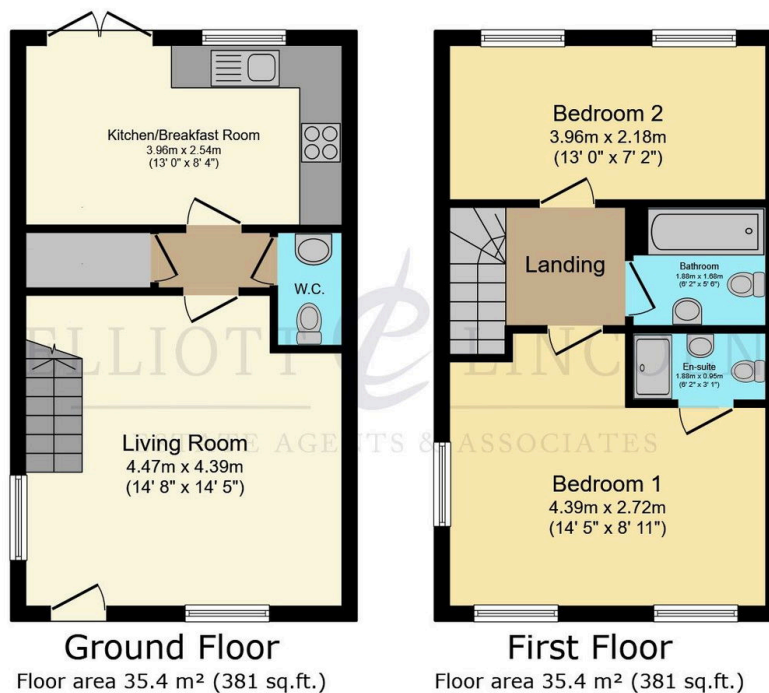
Roundhouse Mews, Ryde.

£240,000

 2  2  1



- Minutes from the Seafront
- Parking
- 2 Bathrooms
- Garden & Patio
- Secluded & Quiet
- Central Ryde
- Character Modern Property
- Views of Portsmouth (from 1st floor)
- Mews Development
- Chain Free



TOTAL: 70.8 m² (762 sq.ft.)

This floor plan is for illustrative purposes only. It is not drawn to scale. Any measurements, floor areas (including any total floor area), openings and orientations are approximate. No details are guaranteed, they cannot be relied upon for any purpose and do not form any part of any agreement. No liability is taken for any error, omission or misstatement. A party must rely upon its own inspection(s). Powered by www.Propertybox.io

A modern character property. Grade II listed, freehold, two-bedroom, semi-detached home nestled in a convenient and central location. Built cc 2007, this charming property offers a blend of modern comfort and historical character. The home boasts gas central heating, double glazing, and the rare advantage of off-road parking.