

## Arkwright Mews, Oakridge Park, MK14

Offers Over £600,000

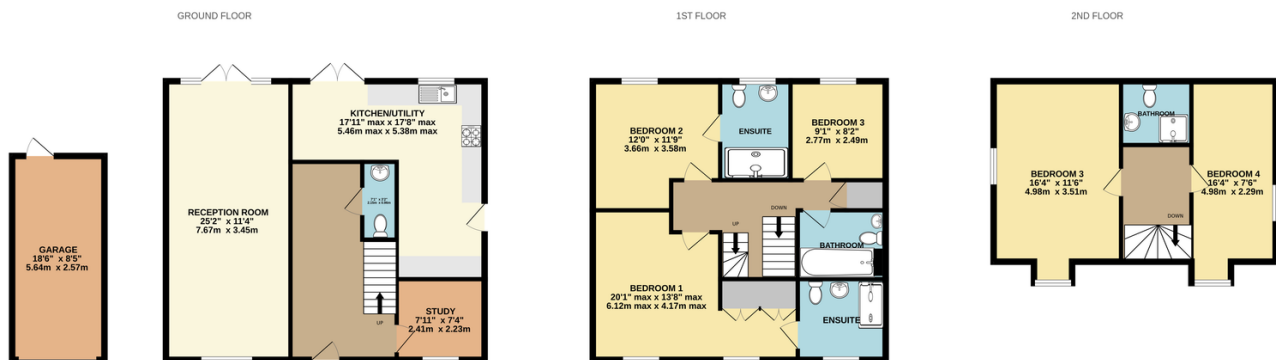
5 4 2



Please quote KM0096 - Stunning five bedroom detached family home (2,019 Sq.Ft) with driveway parking, garage and attractive garden superbly situated in a sought after cul-de-sac location. The property has been fully renovated and superbly appointed by the current owners, offering bright and spacious accommodation over three floors, with elegant interiors, high quality finish and neutral palette throughout. Ideal for modern family life, with versatile, flowing living space creating the perfect blend of comfort and convenience, this impressive home is not to be missed. Features include a double length reception, ground floor study, impressive wrap-around kitchen/diner with utility area and doors onto the garden, four bath/shower rooms (two en-suite), guest WC, gas central heating, double glazing, quality floor coverings, and ample inbuilt storage.

## Key Features

- Stunning Five Bedroom Detached Family Home (2,019 Sq.Ft)
- Superbly Renovated and Beautifully Appointed
- Impressive Kitchen/Diner/Utility
- Delightful Private Garden
- Close to Local Amenities and Wonderful Countryside
- Sought After Oakridge Park Location
- Double Length Reception and Separate Study
- Four Bath/Shower Rooms (Two En-Suite) Plus Guest WC
- Driveway Parking and Garage with Power/Light
- Please quote KM0096



TOTAL FLOOR AREA : 2019sq.ft. (187.6 sq.m.) approx.

Whilst every attempt has been made to ensure the accuracy of the floorplan contained here, measurements of doors, windows, rooms and any other items are approximate and no responsibility is taken for any error, omission or mis-statement. This plan is for illustrative purposes only and should be used as such by any prospective purchaser. The services, systems and appliances shown have not been tested and no guarantee as to their operability or efficiency can be given.

Made with Metropix ©2024