



Highfield Lane, Oakworth, Keighley, BD22 7JB

£995,000

🛏️ 6 🚿 6 🚗 5



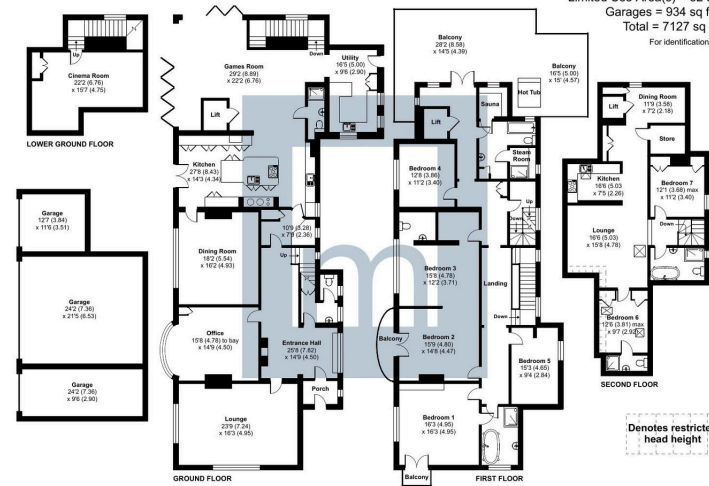
- Substantial six/seven bedroom detached residence extending to over 6,000 sq ft
- Set within approximately 1.8 acres of landscaped private gardens and grounds
- Bespoke open-plan kitchen with central island and bi-fold doors to terrace
- Triple garage and sweeping driveway with secure gated entrance
- Parcel of land within the grounds available by separate negotiation (former planning consent lapsed)
- Self-contained two-bedroom annexe with private entrance and lift access
- Elegant reception rooms with high ceilings, period features and open fires
- Cinema room, sauna and steam room providing at-home leisure spa facilities
- Luxurious principal suite with en-suite bathroom and walk-in dressing room
- Council Tax Band G | EPC Band D





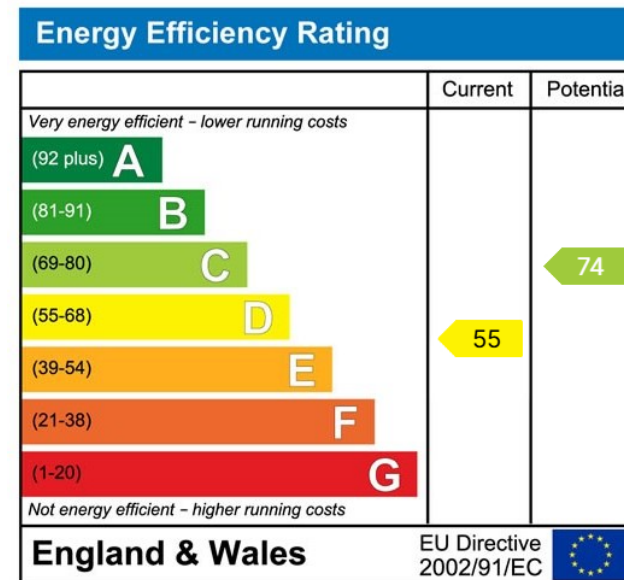
Withens, Highfield Lane, Oakworth, Keighley, BD22

Approximate Area = 6161 sq ft / 572.3 sq m
 Limited Use Area(s) = 32 sq ft / 3 sq m
 Garages = 934 sq ft / 86.7 sq m
 Total = 7127 sq ft / 662 sq m
 For identification only - Not to scale



Floor plan produced in accordance with RICS Property Measurement 2nd Edition, incorporating International Property Measurement Standards (IPMS Residential). © richcom 2025. Produced for Macaulay & Co. REF: 1281919

Withens is an outstanding **country residence** of considerable scale, set within approximately **1.8 acres of private landscaped grounds** (including a parcel available by separate negotiation). Offering elegant formal reception rooms, **six/seven bedrooms**, a **self-contained annexe** and leisure amenities including a **cinema room** and **spa suite**, the property combines privacy and convenience in equal measure. **A parcel of land within the grounds is also available by separate negotiation**, offering further scope for future development (subject to consents).



28 Main Street, Cross Hills, Keighley, BD20 8TQ
 01535 279 326
 enquiries@macaulayandco.co.uk

macaulayandco.co.uk

Residential Lettings | Commercial Lettings | Property Management | Block & Estate Management

Agents Note: Whilst every care has been taken to prepare these sales particulars, they are for guidance purposes only. All measurements are approximate are for general guidance purposes only and whilst every care has been taken to ensure their accuracy, they should not be relied upon and potential buyers are advised to recheck the measurements