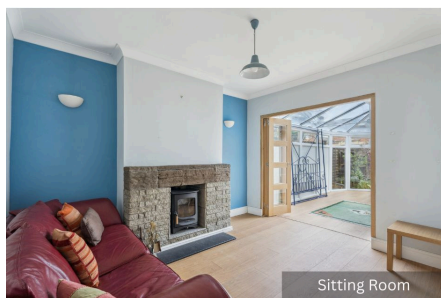


Courtland Road, Oxford, OX4 4HZ

Guide Price £475,000

4 1 3



Semi detached house with a hefty 1365sqft floor area. Accommodation comprising three reception rooms and four bedrooms while outside is a South West facing garden and a driveway/parking space and all of this close enough to walk to a range of local shops and cafes including an all important co-op supermarket!

Key Features

- Semi Detached Home
- Two reception rooms & conservatory
- Four Bedrooms
- Downstairs WC
- Floor Area: 1365sqft
- South West Facing Garden
- Driveway/Parking Space
- Walking Distance to Cafes shops and Co Op Supermarket
- Local Bus Routes Nearby

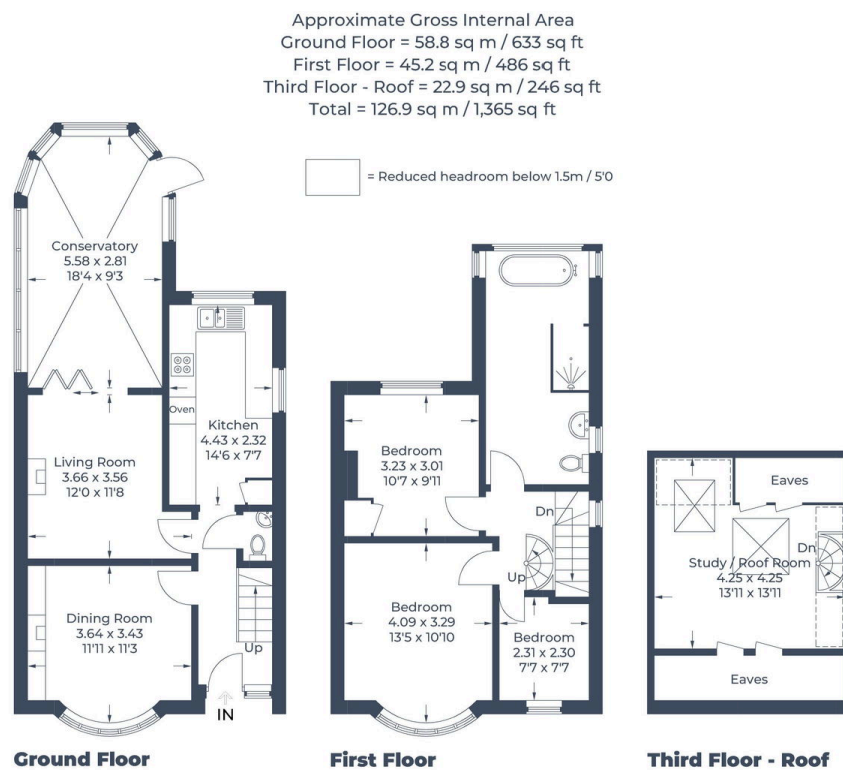


Illustration for identification purposes only, measurements are approximate, not to scale.

© CJ Property Marketing