



Enfields Hythe  
3 Marsh Parade,  
Hythe, Southampton,  
Hampshire, SO45 6AN  
T 023 8084 9210  
E sales-hythe@enfields.co.uk

# Cathay Gardens, Dibden, Southampton, SO45 5TY

Guide Price £285,000

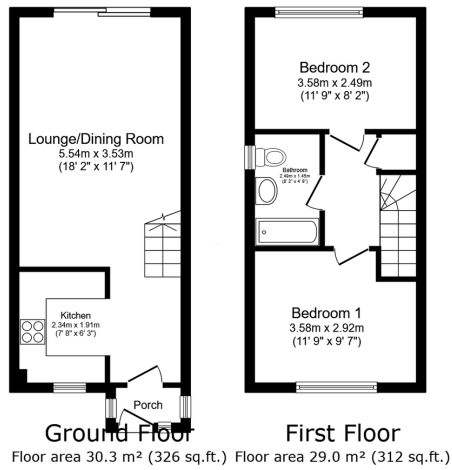
🛏️ 2 🪑 1 🚗 1



**\*\*\* NO CHAIN \*\*\***

This charming two-bedroom property located in a quiet cul-de-sac, offers a comfortable and practical layout, perfect for modern living. On the ground floor, the home features a welcoming entrance porch with a double-glazed door and side windows which provides plenty of light. Leading to the modern well-equipped kitchen which has a built-in oven and gas hob, ample storage and space for appliances. The lounge boasts ample living space and sliding patio door that provide access to the enclosed rear garden. Upstairs, the property includes a generously sized main bedroom, a second bedroom with a rear aspect, and a contemporary shower room with modern fixtures. The private rear garden offers a patio and grass laid to lawn, flower borders, and off-road parking at the end of the garden, which has space for two cars. This freehold property also benefits from gas central heating, double glazing throughout and loft area.

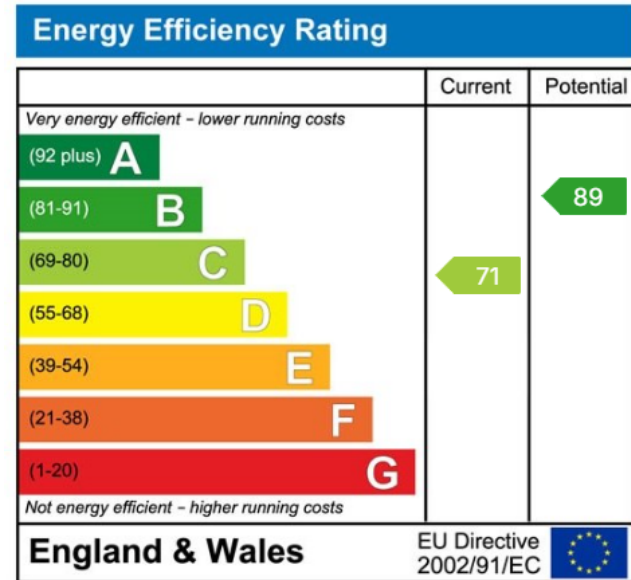




TOTAL: 59.3 m<sup>2</sup> (638 sq.ft.)

This floor plan is for illustrative purposes only. It is not drawn to scale. Any measurements, floor areas (including any total floor area), openings and orientations are approximate. No details are guaranteed, they cannot be relied upon for any purpose and do not form any part of any agreement. No liability is taken for any error, omission or misstatement. A party must rely upon its own inspection(s). Powered by www.Propertybox.co.uk

- No Forward Chain
- Lounge/Diner
- Double Glazing
- Gas Heating
- Two Double Bedrooms
- Private Rear Garden
- Off-Road Car Parking Spaces
- Freehold Property



[www.enfields-southampton.co.uk](http://www.enfields-southampton.co.uk)



It is Enfields policy to respect any sole agency currently in force and we would not be able to commence marketing until this has expired or been terminated. If you fail to terminate any previous agreement you could be liable for two sets of fees. Enfields Hythe is a trading name of YTF LTD Registered office: 345 Shirley Road, Southampton, Hampshire, England, SO15 3JD. Company Registration No: 10459987. VAT Registration No: 281 2975 81.

Enfields Lettings - Embley Management LTD T/A Enfields. Registered Address: 345 Shirley Road, Southampton, Hampshire, England, SO15 3JD. Company Registration No: 14847604. VAT Registration No: 439 8546 45.

