



Enfields Hythe
3 Marsh Parade,
Hythe, Southampton,
Hampshire, SO45 6AN
T 023 8084 9210
E sales-hythe@enfields.co.uk

Whealers Walk, Blackfield, Southampton, SO45 1WX

Guide Price £300,000

3 1 1

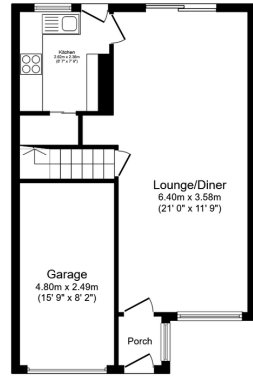


NO ONWARD CHAIN - This well-maintained three-bedroom semi-detached home is situated on a quiet no-through road in Blackfield, close to local amenities.

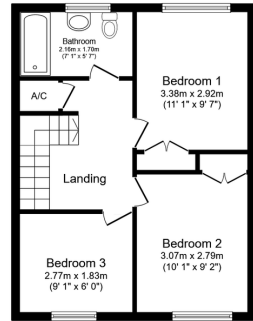
The property boasts a private driveway and garage, providing ample off-road parking. Upon entry, a welcoming porch leads into the main living area. The kitchen offers a range of base and wall units with worktops and tiled backsplash, an integrated fridge and freezer, stainless steel gas hob with extractor hood above, and a double oven. Additional features include an under stairs storage cupboard and a half-glazed door leading to the low maintenance garden. The home features two spacious double bedrooms and a single bedroom, complemented by a modern white suite family bathroom with a P-shaped bath and shower overhead.

The enclosed rear garden offers a low-maintenance outdoor space with a patio, accessible via sliding doors from the main living area and access from the kitchen, along with a charming summer house—perfect for relaxation or additional storage.

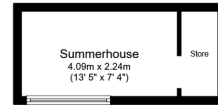




Ground Floor
Floor area 52.5 m² (565 sq.ft.)



First Floor
Floor area 47.3 m² (509 sq.ft.)

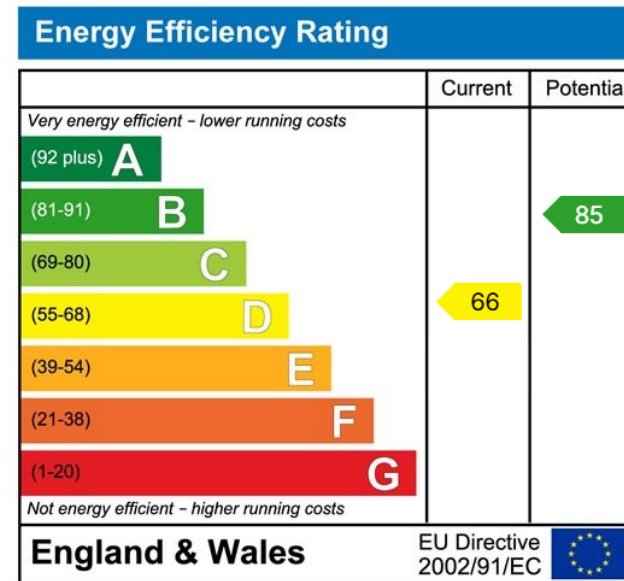


Outbuilding
Floor area 11.5 m² (124 sq.ft.)

TOTAL: 111.4 m² (1,199 sq.ft.)

This floor plan is for illustrative purposes only. It is not drawn to scale. Any measurements, floor areas (including any total floor area), openings and orientations are approximate. No details are guaranteed, they cannot be relied upon for any purpose and do not form any part of any agreement. No liability is taken for any error, omission or misstatement. A party must rely upon its own inspection(s). Powered by www.Propertybox.co

- NO ONWARD CHAIN
- Located On a Quiet No-Through Road
- Entrance Porch
- Three-Bedroom Semi-Detached Home
- Spacious Lounge Area
- Modern Family Bathroom
- Driveway and Garage
- Low-Maintenance Private Enclosed Rear Garden
- Summer House
- Gas Central Heating



www.enfields-southampton.co.uk



It is Enfields policy to respect any sole agency currently in force and we would not be able to commence marketing until this has expired or been terminated. If you fail to terminate any previous agreement you could be liable for two sets of fees. Enfields Hythe is a trading name of YTF LTD Registered office: 345 Shirley Road, Southampton, Hampshire, England, SO15 3JD. Company Registration No: 10459987. VAT Registration No: 281 2975 81.

Enfields Lettings - Embley Management LTD T/A Enfields. Registered Address: 345 Shirley Road, Southampton, Hampshire, England, SO15 3JD. Company Registration No: 14847604. VAT Registration No: 439 8546 45.

