



Enfields Hythe
3 Marsh Parade,
Hythe, Southampton,
Hampshire, SO45 6AN
T 023 8084 9210
E sales-hythe@enfields.co.uk

Elkins Square, Bishopstoke, Eastleigh, SO50 8HF

Offers Over £185,000

🛏️ 2 🍽️ 2 🚗 1

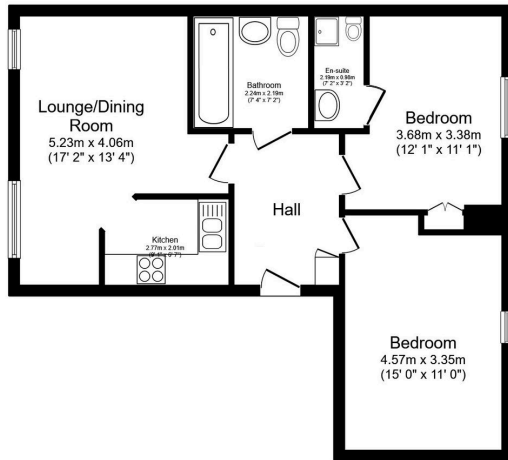


Situated within easy access of local shops and amenities, the accommodation on offer comprises of an entrance hall with door access to all rooms. The lounge/dining room is light and airy with access to the modern fitted kitchen with shaker style units and integrated oven and hob with extractor over. The two double bedrooms are of a good size with the master bedroom benefitting with ensuite shower facilities. The bathroom comprises of a three piece white suite.

Additional benefits include an allocated parking space, visitor parking, well-maintained communal gardens which are mainly laid to lawn and communal bin store area.

The Local Authority area is Eastleigh Borough Council. Tax Band: B



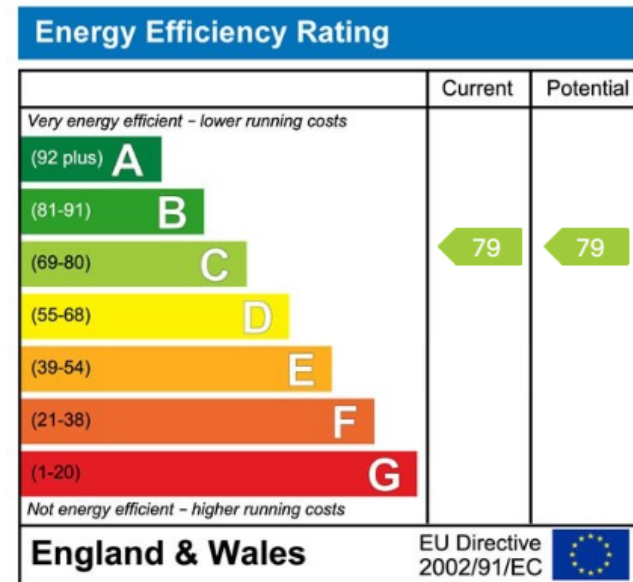


Second Floor

Total floor area 58.7 m² (632 sq.ft.) approx

This plan is for illustration purposes only and may not be representative of the property. Plan not to scale. Powered by PropertyBox

- Second Floor Apartment
- Modern Fitted Kitchen
- Two Double Bedrooms
- Allocated Parking
- Lounge/Dining Room
- Ensuite Shower Facilities to Master Bedroom
- Bathroom



www.enfields-southampton.co.uk



It is Enfields policy to respect any sole agency currently in force and we would not be able to commence marketing until this has expired or been terminated. If you fail to terminate any previous agreement you could be liable for two sets of fees. Enfields Hythe is a trading name of YTF LTD Registered office: 345 Shirley Road, Southampton, Hampshire, England, SO15 3JD. Company Registration No: 10459987. VAT Registration No: 281 2975 81.

Enfields Lettings - Embley Management LTD T/A Enfields. Registered Address: 345 Shirley Road, Southampton, Hampshire, England, SO15 3JD. Company Registration No: 14847604. VAT Registration No: 439 8546 45.

