



Enfields Eastleigh
1E Leigh Road,
Eastleigh, Southampton,
Hampshire, SO50 9FG
T 023 8061 3646
E sales-eastleigh@enfields.co.uk

Drum Road, Eastleigh, SO50 5ST

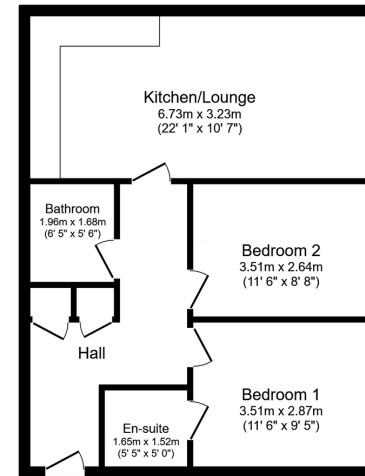
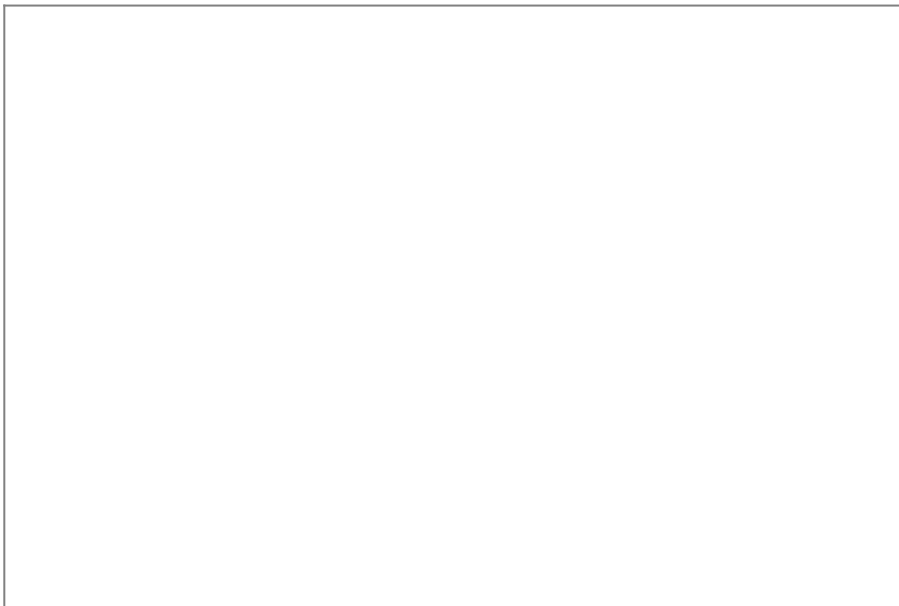
Offers Over £175,000

🛏️ 2 🚿 1 🚪 1



- No Forward Chain
- Two Double Bedrooms
- En-Suite To Master Bedroom
- Allocated Parking Space
- Visitor Parking Available
- Top Floor (Second Floor)
- Open Planned Living/Kitchen Area
- Juliet Balcony
- Walking Distance To Town Center
- 132 Year Lease Remaining

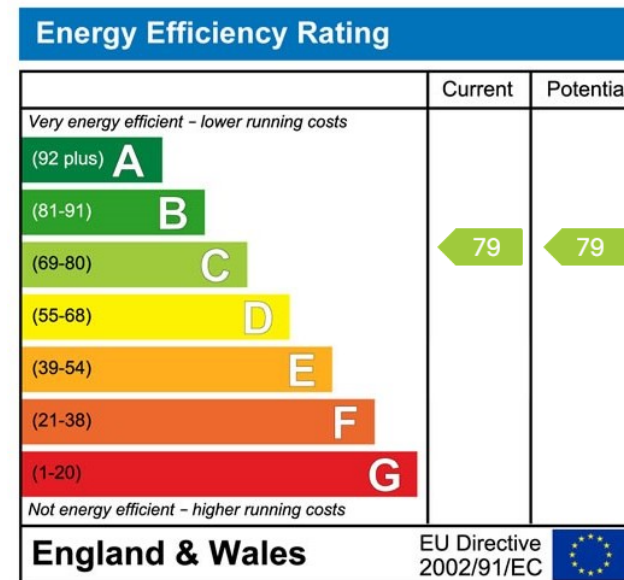




TOTAL: 60.2 m² (647 sq.ft.)

This floor plan is for illustrative purposes only. It is not drawn to scale. Any measurements, floor areas (including any total floor area), openings and orientations are approximate. No details are guaranteed, they cannot be relied upon for any purpose and do not form any part of any agreement. No liability is taken for any error, omission or misstatement. A party must rely upon its own inspection(s). Powered by www.Propertybox.co

GUIDE PRICE £190,000 - Available with no forward chain is this top floor apartment with two double bedrooms including en-suite to main bedroom and one allocated parking space.



www.enfields-southampton.co.uk



It is Enfields policy to respect any sole agency currently in force and we would not be able to commence marketing until this has expired or been terminated. If you fail to terminate any previous agreement you could be liable for two sets of fees. Enfields Eastleigh is a trading name of YTF LTD Registered office: 345 Shirley Road, Southampton, Hampshire, England, SO15 3JD. Company Registration No: 10459987. VAT Registration No: 281 2975 81.

Enfields Lettings - Embley Management LTD T/A Enfields. Registered Address: 345 Shirley Road, Southampton, Hampshire, England, SO15 3JD. Company Registration No: 14847604. VAT Registration No: 439 8546 45.