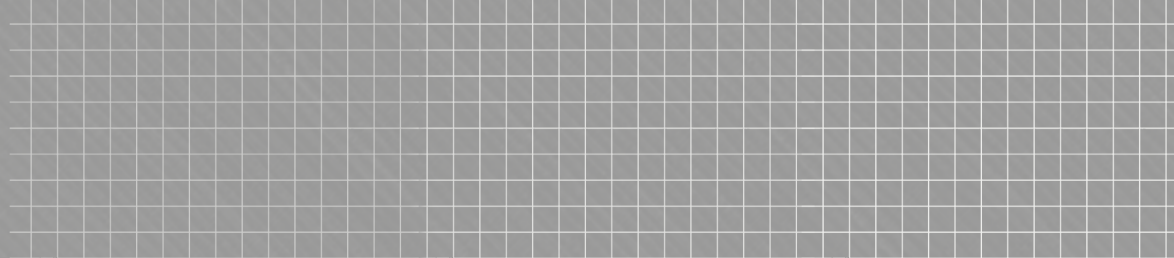




Your Logo



**Flat 2, 157, East End Road,  
£2,500PCM (Deposit: £2,500)**

 2  1  1

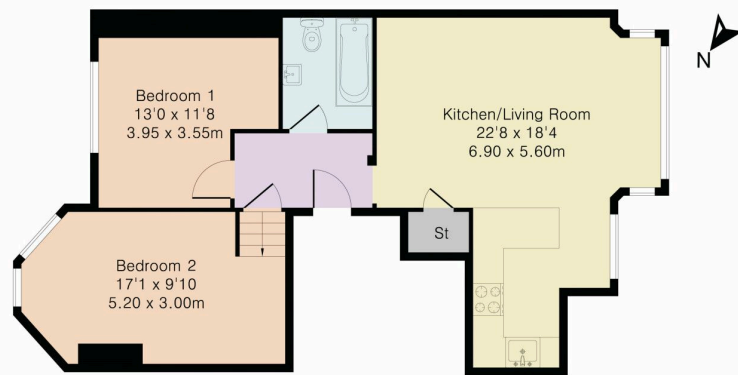


**Tax Band: C Furnished: Not Specified**

- 680 sq ft
- Available early May
- Gas central heating
- Next to shops and local amenities
- Council Tax band: C
- EPC rating: D
- 1 month rent and 1 deposit
- £2500 per cal month



Approximate Gross Internal Area 687 sq ft – 64 sq m



First Floor

