



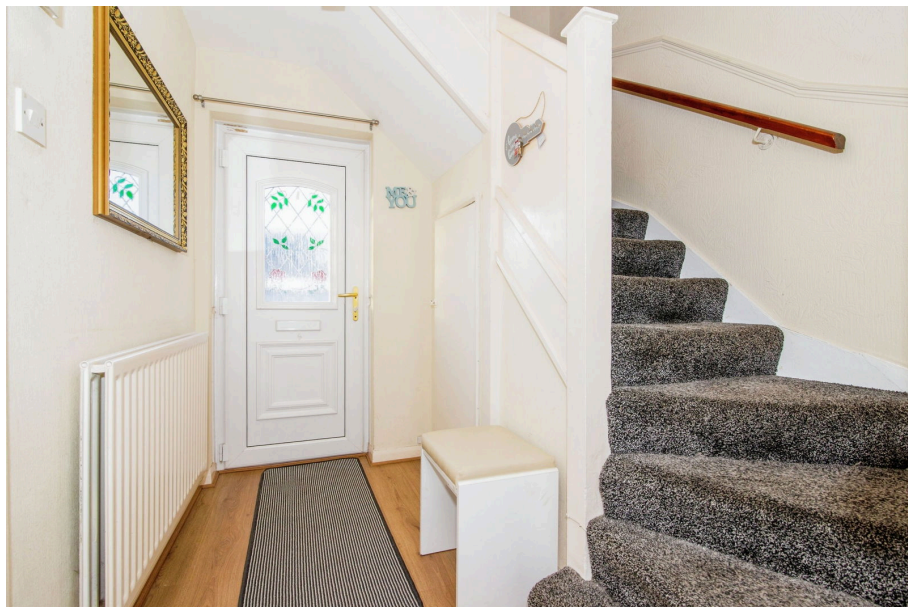
42 Ashington Drive

Offers Over £110,000

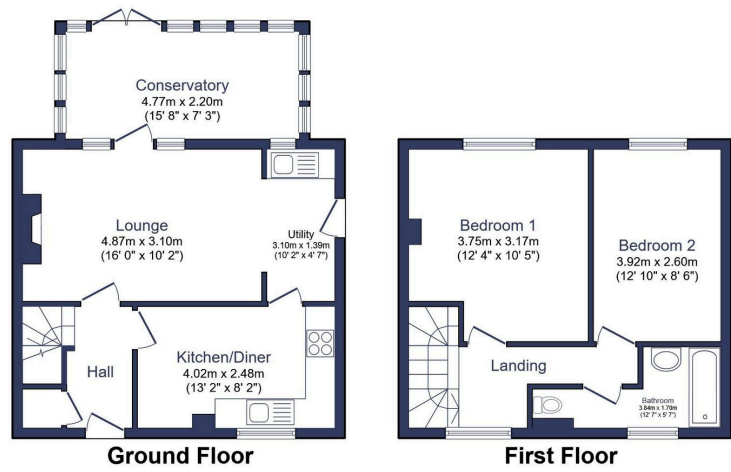
🛏️ 2 🚿 1 🛋️ 2



- Semi-Detached Home
- Two Double Bedrooms
- Three-Piece Family Bathroom
- Kitchen/Breakfast Room
- Utility Room
- Spacious Living Room With Log Burner
- Conservatory
- Wrap-Around Garden
- Multi-Car Driveway
- Great Location



Located in a popular residential spot within Stakeford, we present this two double bedroom semi-detached home to the market, ready to become someone's first home, their downsize or perhaps their next rental investment. Key features include a spacious living room with log burner, a kitchen/breakfast room with utility room adjacent, as well as a conservatory to the rear that opens to a larger than average wrap-around garden. There is a good-sized first floor bathroom, a double driveway to the front and with it's close proximity to local amenities, we look forward to showing this great sized home that has a lot to offer.



Total floor area 83.7 m² (901 sq.ft.) approx

This floor plan is for illustrative purposes only. It is not drawn to scale. Any measurements, floor areas (including any total floor area), openings and orientation are approximate. No details are guaranteed, they cannot be relied upon for any purpose and they do not form part of any agreement. No liability is taken for any error, omission or misstatement. A party must rely upon its own inspection(s). Powered by www.focalagent.com

