

Thornton Crescent, Coulsdon, CR5 1LH

£595,000

3 1 1



Located in a quiet and desirable area of Old Coulsdon, a well-presented and extended home offering comfortable and spacious living accommodation. The property features a bright large reception room with dining room area, a modern kitchen, a further separate reception room currently used as an office, three bedrooms, bathroom making it ideal for families.

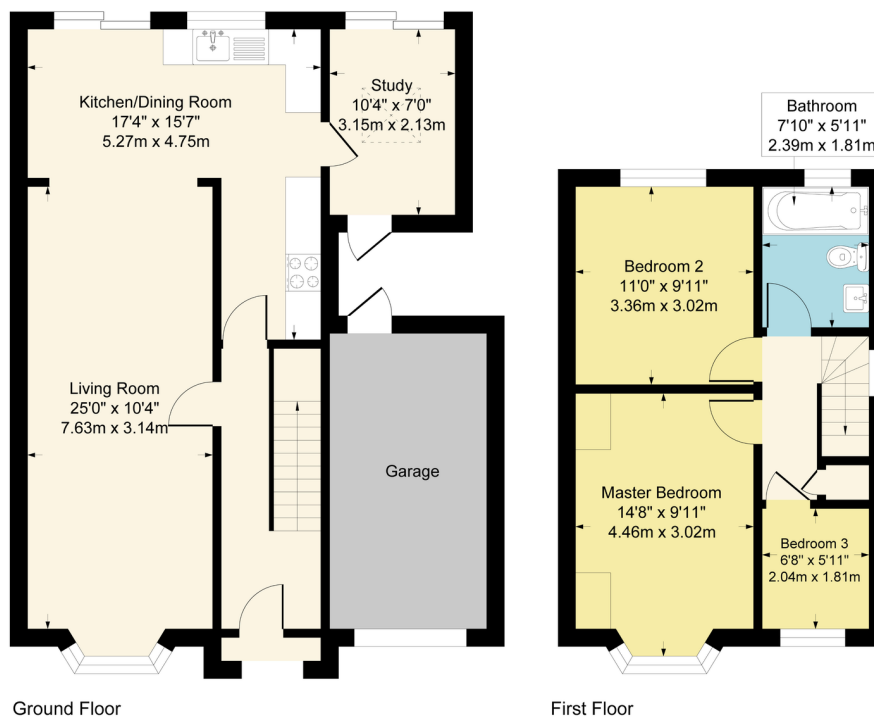
The large south-facing garden provides a wonderful outdoor space, perfect for relaxing or entertaining. A private driveway and garage offer convenient off-street parking.

Close to highly regarded schools, local amenities, and excellent transport links, this home is a fantastic opportunity in a sought-after location. Viewing highly recommended!

Key Features

- SEMI DETACHED FAMILY HOME
- OPEN PLAN KITCHEN/ RECEPTION
- RECENTLY DECORATED
- DRIVEWAY PARKING
- THREE BEDROOMS
- GARAGE
- EPC - D
- COUNCIL TAX BAND - E
- BATHROOM
- GARDEN

**Approximate Gross Internal Area
1050 sq ft - 97 sq m**



Although every attempt has been made to ensure accuracy, all measurements are approximate.
This floorplan is for illustrative purposes only and not to scale.
Measured in accordance with RICS Standards.