

MARTIN DREW

POWERED BY
exp UK

1 Biddlesden Road, Westbury

£400,000

 3  1  2



With fields views to front & large garden to rear, this excellently presented 3 double bedroom home in the popular village of Westbury further boasts large purpose built workshop, refitted kitchen & refitted bathroom. A must view

M: 07970663757

E: martin.drew@exp.uk.com

W: www.martin.drew.exp.uk.com



MARTIN DREW

POWERED BY
exp UK

Key Features

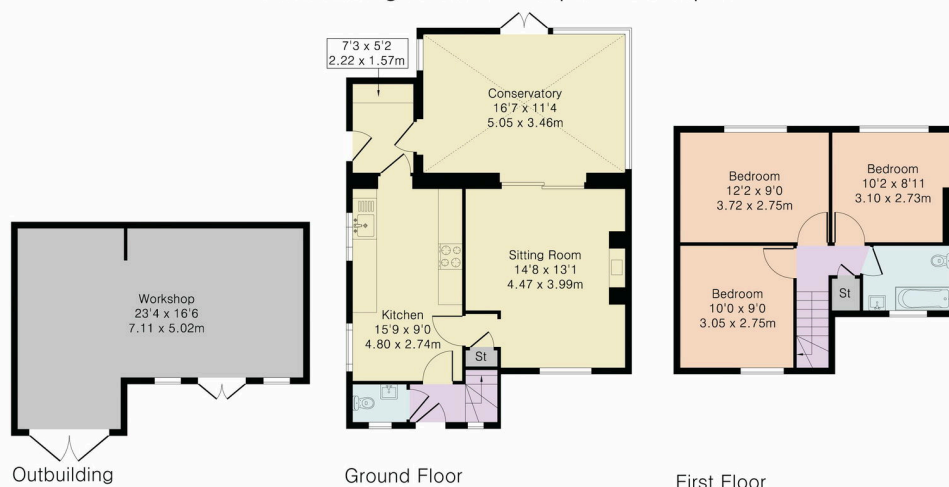
- 3 double bedrooms
- refitted kitchen
- refitted bathroom
- utility room
- conservatory
- cloakroom
- living room
- large purpose built workshop
- large garden
- driveway for up to 4

Approximate Gross Internal Area 1345 sq ft - 125 sq m

Ground Floor Area 640 sq ft – 59 sq m

First Floor Area 383 sq ft – 36 sq m

Outbuilding Area 322 sq ft – 30 sq m



Although Pink Plan Ltd ensures the highest level of accuracy, measurements of doors, windows and rooms are approximate and no responsibility is taken for error, omission or misstatement. These plans are for representation purposes only as defined by RICS code of measuring practice. No guarantee is given on total square footage of the property within this plan. The figure icon is for initial guidance only and should not be relied on as a basis of valuation.



M: 07970663757

E: martin.drew@exp.uk.com

W: www.martin.drew.exp.uk.com

