






MILLINGTON TUNNICLIFF

www.millingtontunnickliff.co.uk

Berkeley Way, Ivybridge, PL21 0YD

Guide Price £420,000

 4  2  2



A spacious 4 bedroom detached house set at the start of this popular cul de sac on the eastern side of Ivybridge within level walking distance of local amenities. The house is of an unusual design with cloakroom, living room, dining room and kitchen/breakfast room on the ground floor, together with the 4 bedrooms and modern family bathroom and en suite shower room on the upper floor. The house sits on a level site with enclosed rear garden and enjoys a double width driveway and double garage. There is Upvc double glazing and gas central heating. No chain. EPC D 59.

01752 896020 | info@millingtontunnickliff.co.uk | 19 Fore Street, Ivybridge, Devon, PL21 9AB

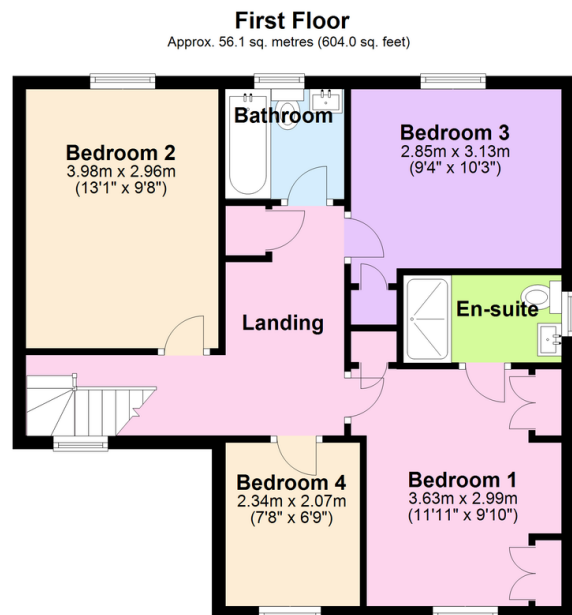
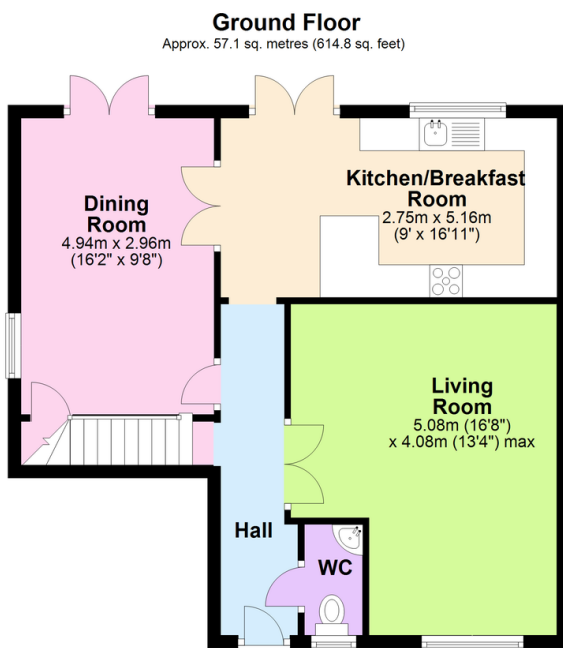


MILLINGTON TUNNICLIFF

www.millingtontunncliff.co.uk

Key Features

- 4 Bedroom Detached House
- Integrated Kitchen/Breakfast Room
- Modern Bathroom and En Suite Shower Room
- Gas Central Heating
- Enclosed Rear Garden
- 2 Reception Rooms
- Double Width Drive And Double Garage
- Upvc Double Glazing
- Cloakroom
- Level Walking Reach Of Ivybridge Centre



Total area: approx. 113.2 sq. metres (1218.8 sq. feet)

01752 896020 | info@millingtontunncliff.co.uk | 19 Fore Street, Ivybridge, Devon, PL21 9AB