



MILLINGTON TUNNICLIFF

www.millingtontunncliff.co.uk

Stowaway, School Lane, Plympton

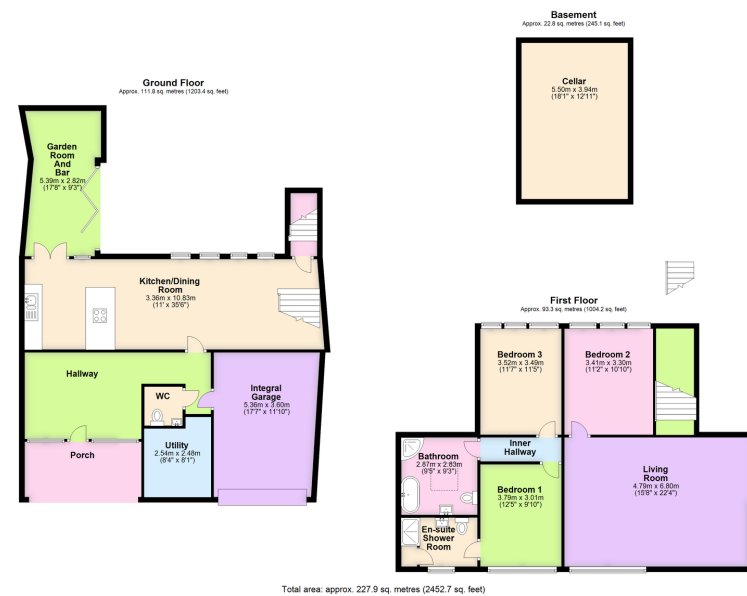
Guide Price £485,000

3 2 2



- Architect Designed 3 Double Bedroom Detached House
- First Floor Living Room With Vaulted Ceiling
- Garden Room And Bar With BiFold Doors
- 4 Piece Shower Room
- Heart Of Plympton St Maurice
- Feature Open Plan Modern Kitchen/Diner
- Double Glazing
- En Suite Shower Room
- Integral Garage
- Cellar Store





A fabulous 3 double bedroom detached house set within the heart of Plympton St Maurice. The house is architect designed and was part redeveloped from former stone outbuildings from a house on the main Fore Street. The accommodation comprises an open entrance porch, hallway, cloakroom, utility room, open plan kitchen/diner and sun lounge/bar on the ground floor, together with vaulted first floor rooms comprising of a living room, the 3 bedrooms, en suite shower room and family bathroom. The house is double glazed, gas centrally heated, has modern kitchen and bathroom/shower fittings. Externally there is a private southerly facing courtyard terrace an integral garage and cellar. Highly recommended. EPC D 57.

11/02/24, 5:05 PM Energy performance certificate (EPC) - Find an energy certificate - GOV.UK

English | [Contact](#)

Energy performance certificate (EPC)

Address: Plympton PLYMPTON	Energy rating: D	Valid until: 3 November 2034
Property type: Detached house	Current energy score: 57	Potential energy score: 71

Rules on letting this property

Properties can be let if they have an energy rating from A to E.

Energy rating and score

This property's energy rating is D. It has the potential to be C.

Score	Energy rating	Current	Potential
92+	A		
81-91	B		
69-80	C		
55-68	D	57	71
39-54	E		
21-38	F		
1-20	G		

Breakdown of property's energy performance

- the average energy rating is D
- the average energy score is 60

01752 896020 | info@millingtontunnicliff.co.uk | 19 Fore Street, Ivybridge, Devon, PL21 9AB