



MILLINGTON TUNNICLIFF

www.millingtontunncliff.co.uk

Loughtor Mill, Apartment 2 Principal Mill, Newnham, Plympton

Guide Price £395,000

3 2 1



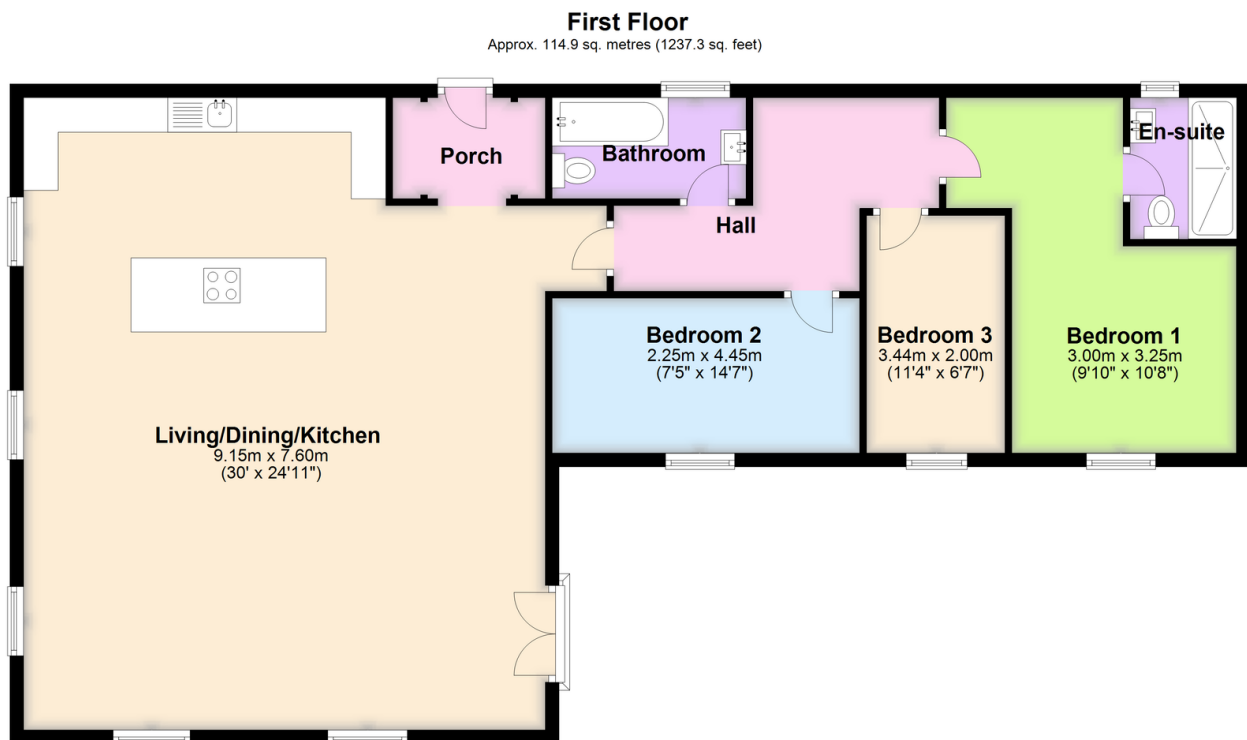
A fabulous first floor apartment converted from part of the former principal building of Loughtor Mill. This award-winning property comprises a completely self contained conversion of the entire first floor, with private entrance at rear, open plan living/dining/kitchen having triple aspect, 3 bedrooms, en suite shower room and family bathroom. externally there is a small area to sit immediately outside at rear and an allocated parking area with electric car charging point. The conversion is designed for the future with underground ultrafast fibre, an air source heat pump, solar panels, underfloor heating and double glazing. The predicted EPC is A. No chain.

01752 896020 | info@millingtontunncliff.co.uk | 19 Fore Street, Ivybridge, Devon, PL21 9AB



Key Features

- Stone Faced First Floor Converted Apartment
- Air Source Heat Pump And Solar Heating/ Hot Water
- Part Of Award Winning Redevelopment Of Former Mill
- Family Bathroom And En Suite Shower Room
- Double Glazing
- 3 Bedrooms
- Electric Car Charging Point
- Impressive Open Plan Living/Dining/ kitchen With Integrated Appliances
- Original Features To Include 4 Steel Columns
- Predicted EPC Band A



Total area: approx. 114.9 sq. metres (1237.3 sq. feet)