



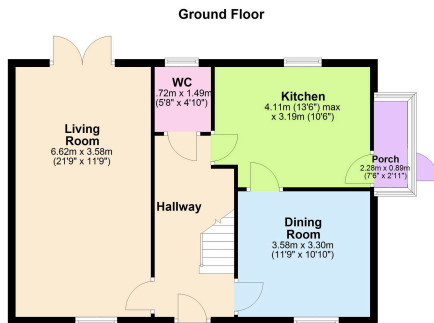
**HENDERSON
CONNELLAN**
ESTATE AGENTS

6 Winston Drive, Isham

£1,800PCM (Deposit: £1,800)

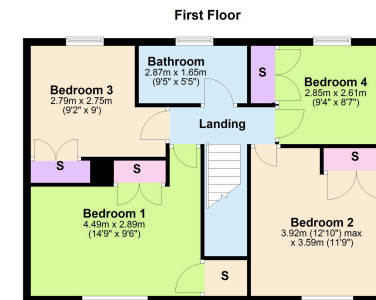
🛏️ 4 🪑 1 🚗 2





Tax Band: Furnished: Unfurnished

This impressive family home, situated in the desirable village of Isham, offers generous living spaces and modern comforts throughout. The property has been thoughtfully designed to provide excellent family accommodation, featuring four substantial bedrooms, each benefiting from built-in storage solutions. The heart of the home showcases a newly fitted kitchen with contemporary appliances, including an electric hob, perfect for those who enjoy cooking and entertaining. The property's appeal extends outdoors with a beautifully landscaped garden, providing an ideal space for family recreation. The practical aspects of modern living are well-catered for with a family bathroom, substantial garage, and a spacious driveway accommodating 3-4 vehicles. The property benefits from gas central heating throughout, ensuring year-round comfort. Its location in Isham Village offers the perfect



15-16 Market Place, Kettering, Northamptonshire, NN16 0AJ

